



Greythorn Primary School

Headteacher: Mrs Tae Carpenter

Greythorn Drive, West Bridgford
Nottingham, NG2 7GH

Telephone: 0115 914 9779

Fax: 0115 914 9778

Email: office@greythorn.notts.sch.uk

 @GreythornPS



Newsletter: Friday 15th September 2023

Dear Parents and Carers,

After a full week back in school, Greythorn is now in full 'raring to go' mode! We have been impressed with how quickly the children have settled into their new class routines and are working hard.

Congratulations!

To all of our new starters in Elm and Pine classes. You've completed your first week at school and you have been brilliant!

Be Greythorn Smart! -School Uniform

Greythorn school uniform is a red school sweatshirt/jumper/cardigan (no hoodies), a red polo shirt (white is acceptable until September 2025), dark grey trousers, dark grey skirt or pinafore, dark grey shorts (**Not black**), plain black shoes (not trainers- no logos allowed), grey or white socks, grey or red tights. Red checked summer dresses are also acceptable.

Please be reminded that all school uniform should be clearly labelled, including PE kit.

Children should not be wearing nail varnish to school. Hair cuts should not be extreme- no shaved lines, skin fades, dyed hair or bright, glitzy decorative hair accessories. All hair accessories should be plain dark colours or school colours.

Only small stud earrings are allowed (No drop earrings or large oversized earrings). Your child must be able to remove them for PE lessons. No smart watches to be worn. Hair to be tied back for PE.

Coming into school in the mornings

Now that the children are settled in, KS2 (Y3-6) pupils should come in through the gate by themselves whilst Foundation and KS1 (Y1&2) pupils can come in with parents. Parents are reminded that the gate closes promptly at 9am. Please refrain from using your phone on site and from catching teachers at the class door at this time; please either make an appointment to meet or contact staff via Class dojo.

Secondary school applications

A reminder that applications for your child's secondary school admission close on the Tuesday 31st October. Click the link for details on how to apply.

<https://www.nottinghamshire.gov.uk/education/school-admissions/hub>

Please ensure that you fill in all 4 secondary school choices even if you live in the catchment area and/or only want one school. This is to avoid being placed at schools far away should your application be unsuccessful. Please speak to Mrs Cox or Mrs Parkin if you would like to discuss this- we are also more than happy for you to arrange to come into school to fill the application form in.

School Council

School council applications are open and elections will take place next week.

A huge Thank you!

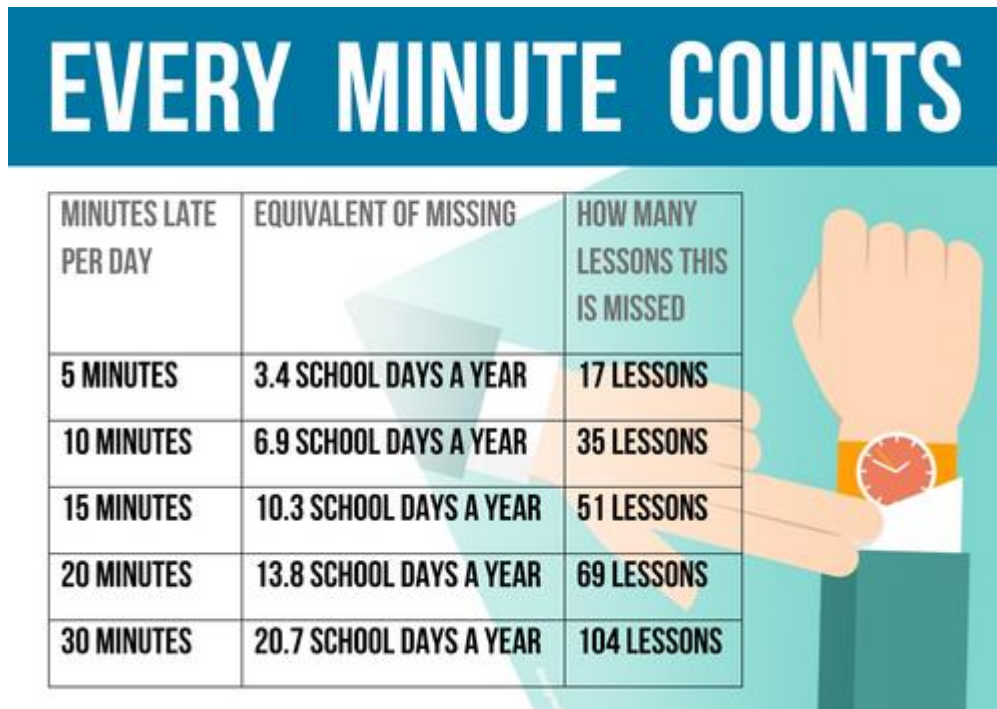
At the end of the Summer term, FOGSA raised money for lots of outdoor learning equipment: insect boxes, weather stations, class sets of bird watching kits and lots of interesting and fun outdoor equipment. Thank you, FOGSA!

FOGSA Come and join us!

FOGSA are looking for new, eager enthusiastic parents to their team. **The FOGSA AGM will be held on Wednesday 20th September at 6.30pm at school.**

This is an opportunity for parents to get involved in organising fundraising events and activities, meet other parents and do something worthwhile that has a direct impact on our children.

Attendance: - Lateness



It is imperative that your children arrive on time for school each day.

The effects of lateness on your child can cause emotional distress and dysregulation, missed morning routines and key learning and missed early morning social time with their peers.

The gate is open from 8.50am until 9am. After 9am, the gate is closed and you will be asked to take your children via the school office.

Lateness is regularly monitored, should this continue you will be invited into school to discuss ways in which we can help improve this.

In total this week, there has been 8 hours and 26 minutes lost in learning time due to lateness. Let's improve this.

Protocol for absence

If your child is not in school, please be sure to phone school, and leave a message on the answerphone with their name and reason, before 9am, to let us know. Should you not do this, we will make every effort to contact you to ask about your child's whereabouts. It is absolutely vital that your child attends school everyday bar illness.

Holidays

Please do not take holidays in school term time. Holidays in term time will never be authorised and if taken, could result in a County fine.

Parking

We have received several emails, this week, from our neighbours, regarding inconsiderate and dangerous parking. Please ensure that you park safely away from the school, when collecting and dropping off your children.

Do not block drives and entries or park on the yellow lines or dropped kerbs. This is illegal and could result in you receiving a fine from the local enforcement team.

It is everyone's duty of care to ensure that we keep our pupils and community safe by parking responsibly.

Bikes and scooters

Please remind your children to WALK with their bikes and scooters when on school site.

Greythorn open mornings

Do have any children starting school, next year (Sep 2024) or know anyone who does? You are warmly invited to attend our school open days on:

Wednesday 11th October 9.30am- 11.30am

Saturday 14th October 10am-12noon

Wednesday 15th November 9.30am – 11.30am

Saturday 25th November 10am- 12noon

Come and see our wonderful school in action, meet the teachers- more details to follow.

Upcoming events

Inset Days 2023-2024

A reminder that the Inset days for next academic year are:-

Monday 6th November 2023

Monday 26th February 2024

Monday 3rd June 2024

This half term's dates

Friday 15 th September	Greythornfest for Y4/5
Saturday 16 th September	Rushcliffe boy's football tournament (by invitation)
Saturday 23 rd September	Rushcliffe girl's football tournament (by invitation)
Thursday 28 th September	School photos (individual)
Friday 29 th September	Macmillan coffee morning- (further details, nearer the time)
Tuesday 3 rd October	Derby Museum trip Y3/4
Wednesday 4 th October	Derby Museum trip Y3/4
Thursday 5 th - 10 th October	Scholastic book fair
Wednesday 11 th October	Open morning for prospective FS parents
Saturday 14 th October	Open morning for prospective FS parents
Monday 16 th October	Y56 to see Oliver at WBS
Tuesday 17 th October	Parents' Evening
Thursday 19 th October	Parents' Evening
Friday 20 th October	Break up for half term
Tuesday 7 th November	Return to school

Best wishes,



Mrs Tae Carpenter