



Greythorn Primary School

Headteacher: Mrs Tae Carpenter

Greythorn Drive, West Bridgford
Nottingham, NG2 7GH

Telephone: 0115 914 9779

Fax: 0115 914 9778

Email: office@greythorn.notts.sch.uk

 @GreythornPS



Newsletter: Friday 12th January 2024

Dear Parents and Carers,

Welcome back to school and a very Happy New Year! We trust that you all had a wonderful holiday and enjoyed the festivities and the time with your children and families. It is lovely seeing everybody back, settled back in and focusing on their learning.

Be Greythorn Smart! -School Uniform

Greythorn school uniform is a red school sweatshirt/jumper/cardigan (no hoodies), a red polo shirt (white is acceptable until September 2025), dark grey trousers, dark grey skirt, dark grey shorts (**Not black**), plain black shoes, grey or white socks, grey or red tights.

Please be reminded that all school uniform should be clearly labelled, including PE kit.

Children should not be wearing nail varnish to school. Haircuts should not be extreme- no shaved lines, skin fades, dyed hair or bright, glitzy decorative hair accessories. All hair accessories should be plain dark colours or school colours.

Only small stud earrings are allowed (No drop earrings or large oversized earrings). Your child must be able to remove them for PE lessons. No smart watches to be worn. Hair to be tied back for PE.

Coming into school in the mornings

Parents are reminded that the gate closes promptly at 9am. Please refrain from using your phone on site and from catching teachers at the class door at this time; please either make an appointment to meet or contact staff via Class dojo.

Primary places for September 2024

If you have a child that is due to start school this September a reminder that applications for primary school admission close on **NEXT Monday (15th January)**. Click the link for details on how to apply.

<https://www.nottinghamshire.gov.uk/education/school-admissions/hub>

Please ensure that you fill in all 4 primary school choices even if you live in the catchment area and/or only want one school. This is to avoid being placed at schools far away should your application be unsuccessful.

Flying High Partnership recruitment event

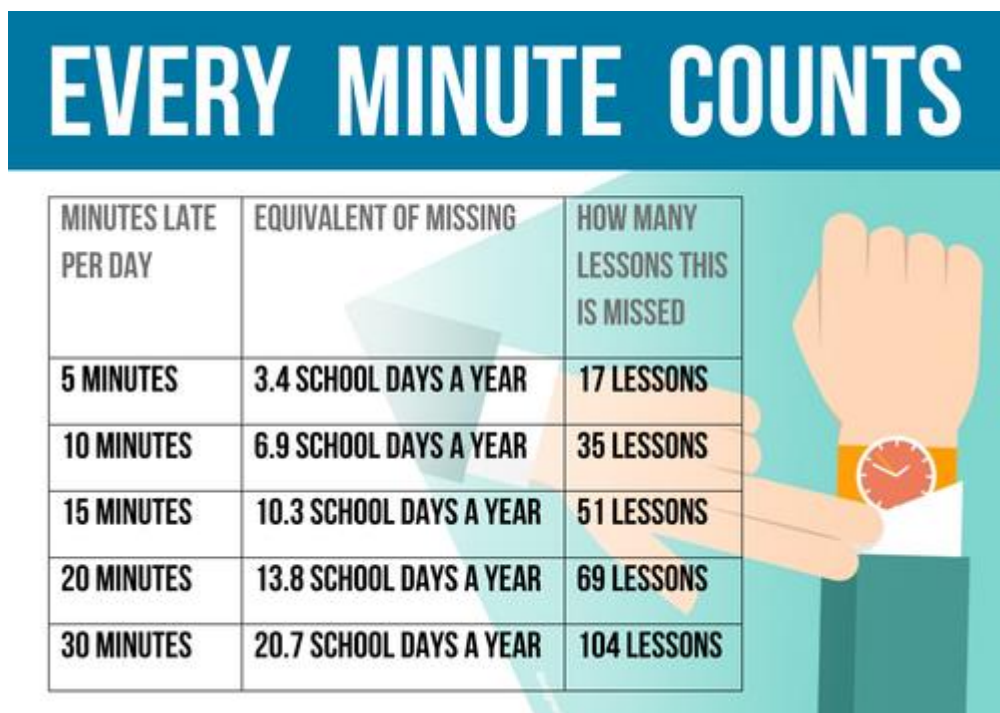
If you would like to learn more about the Flying High Partnership, why not attend our Virtual Recruitment Event on Thursday 1st February 2024 (6 pm – 7:30 pm). Visit [Flying High Partnership Recruitment Event 2024 \(canva.site\)](#) to find out more!

FOGSA Come and join us!

FOGSA are looking for new, eager enthusiastic parents to their team. **The FOGSA AGM will be held on Wednesday 17th January at 6.30pm at school.**

This is an opportunity for parents to get involved in organising fundraising events and activities, meet other parents and do something worthwhile that has a direct impact on our children.

Attendance: - Lateness



It is imperative that your children arrive on time for school each day.

The effects of lateness on your child can cause emotional distress and dysregulation, missed morning routines and key learning and missed early morning social time with their peers.

The gate is open from 8.50am until 9am. After 9am, the gate is closed and you will be asked to take your children via the school office.

Lateness is regularly monitored, should this continue you will be invited into school to discuss ways in which we can help improve this.

In total this week, there has been 8 hours and 25 minutes lost in learning time due to lateness.

Protocol for absence

If your child is not in school, please be sure to phone school before 9 am to let us know. Should you not do this, we will make every effort to contact you to ask about your child's whereabouts. It is absolutely vital that your child attends school everyday bar illness.

Holidays

Please do not take holidays in school term time. Holidays in term time will never be authorised and if taken, could result in a County fine.

Parking

Please ensure that you park safely away from the school, when collecting and dropping off your children. Do not block drives and entries or park on the yellow lines or dropped kerbs. This is illegal and could result in you receiving a fine from the local enforcement team.

It is everyone's duty of care to ensure that we keep our pupils and community safe by parking responsibly.

A piano to go to a good home!



We need to find our school piano (140cm x 115cm x 55cm), a good home! It has a few sticky keys and just needs tuning. It is free to go to a good home. The new owner will need to arrange the collection of it. If you would like to be considered for the piano, (a name will be drawn out of a hat) please email the school office by Friday 19th January.

Young Voices 2024



Y5/6 had an amazing time at the Sheffield Arena on Tuesday evening where they sang and danced their hearts out! With songs ranging from the Matilda medley to In the mood, the fabulous Urban Strides dance troupe and Nandi Bushell- an extremely talented 13-year-old drummer- the evening was a showcase of creative talent, and that includes our own Y5/6. Well done for representing the school so well.

Greythorn Spring Concert 2024

This year, there will be a Spring music concert at Greythorn instead of the summer. Choir will be performing (letter to follow) as well as the instrumental groups and individual instrumentalists. If your child would like to take part playing their instrument, please message Mrs Cox.

Upcoming events

Inset Days 2023-2024

Monday 26th February 2024

Monday 3rd June 2024

Best wishes,



Mrs Tae Carpenter