



GREYTHORN PRIMARY

"Engaging hearts, equipping minds, opening doors"

Summer Term

Weekly Newsletter

19th June 2026

DATES FOR THE DIARY

WEDNESDAY 24th JUNE

Summer Disco

5pm - 5.45pm FS & KS1

6pm - 7pm KS2

FRIDAY 26th JUNE

World Cup Celebration Day - non uniform (see page 2 for details)

9.15am Toddler Stay & Play

3.30pm Cake Sale

TUESDAY 30th JUNE

1.30pm-3.15pm KS2 Sports Day

WEDNESDAY 1st JULY

1.30pm - 3.15pm KS1 Sports Day

FRIDAY 3rd JULY

Non Uniform Day - Year 1 to 6
Manor Farm - Foundation Stage

MONDAY 6th & WEDS 8th JULY

Year 5/6 Performance

FRIDAY 10th JULY

9.15am Toddler Stay & Play

5pm - 7pm Summer Picnic

TUESDAY 14th JULY

2.30pm Summer Concert

6.30pm Summer Concert

SUNDAY 19th - 23rd JULY

Year 6 - York Residential

FRIDAY 24th July

Last Day at School



A MESSAGE FROM YOUR HEADTEACHER

Dear Parents and Carers,

Year 4 had a brilliant time at the Nottingham Tennis Open on Monday, enjoying some fantastic matches in the lovely weather. They watched professional players in action before practising their own tennis and padel skills!

As the weather is set to warm up next week, please ensure children come to school with labelled sun caps and water bottles and that suncream is applied before they arrive. Cardigans and hoodies do not need to be worn.

Finally, we would like to wish a very Happy Father's Day to all of our dads, uncles, grandads and the many wonderful male role models in our families and community!

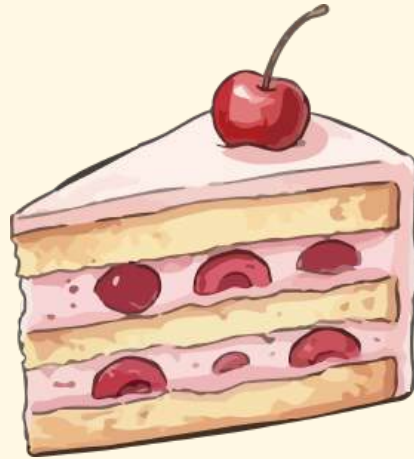
Mrs Carpenter



WORLD CUP CELEBRATION DAY!



SCHOOL CAKE SALE



Delicious Cakes

Friday 26th June 3:30pm
KS1 playground
Please donate cakes and biscuits



SCHOOL COUNCIL NEWS

Jolly Joke Box

Our fabulous School Council has been working hard on an exciting wellbeing project to bring smiles to everyone across the school. As part of this, they have created the Jolly Joke Box! Councillors have spent time collecting jokes from their classes, carefully gathering lots of funny jokes to spread happiness and good vibes to others.

Here's how it works:

If you feel like you need a little smile or laugh to cheer you up, you can ask your teacher if you can visit the Jolly Joke Box in the library area.

The School Council has spent weeks collecting all of these jokes just for you, so we really hope they brighten your day!

Joke of the week:- Q:- What do we call a dog in second place? A:- A silver retriever!



OFSTED PARENT VIEW



OFSTED Parent view

We really value your feedback about our school. We are always looking to improve our service to ensure that we are meeting yours and your children's needs.

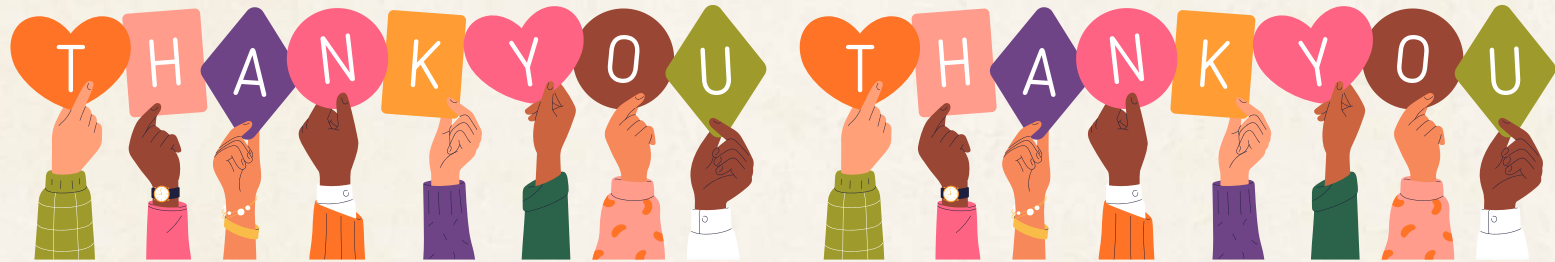
We kindly invite you to complete the Ofsted Parent View survey. This gives you the opportunity to share your views on your child's experience and helps us continue to improve.

Please follow the link below to register and complete the survey:

<https://parentview.ofsted.gov.uk/login?destination=/give-your-view>

Your feedback is important to us and we appreciate you taking the time to complete this.

Thank you for your continued support.



THIS WEEK'S HIGHLIGHTS

Foundation

This week in Foundation, we've been busy strengthening our teamwork skills. The children have loved taking part in a variety of team games, thinking carefully about the rules of the game and exploring how to work together in the most effective way. They have also demonstrated wonderful resilience. Even when things didn't go their way, they encouraged one another, kept trying, and celebrated each other's efforts. It's been a joy to see their confidence grow as they practised staying positive, supporting their teammates, and giving every challenge their best effort.



BE RESILIENT!



THIS WEEK'S HIGHLIGHTS

Year 1/2

Over the past two weeks, Year 1/2 have been busy developing their fieldwork skills in Geography. They have read maps, looked at compasses, used directional language and identified human and physical features, which they then plotted on a map using a key. They have done such a wonderful job and thoroughly enjoyed getting outdoors to put their learning into practice!



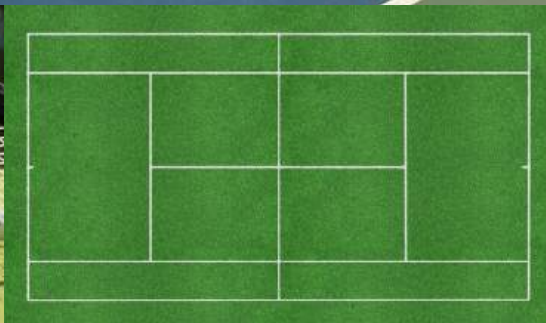
GEOGRAPHY



THIS WEEK'S HIGHLIGHTS

Year 4

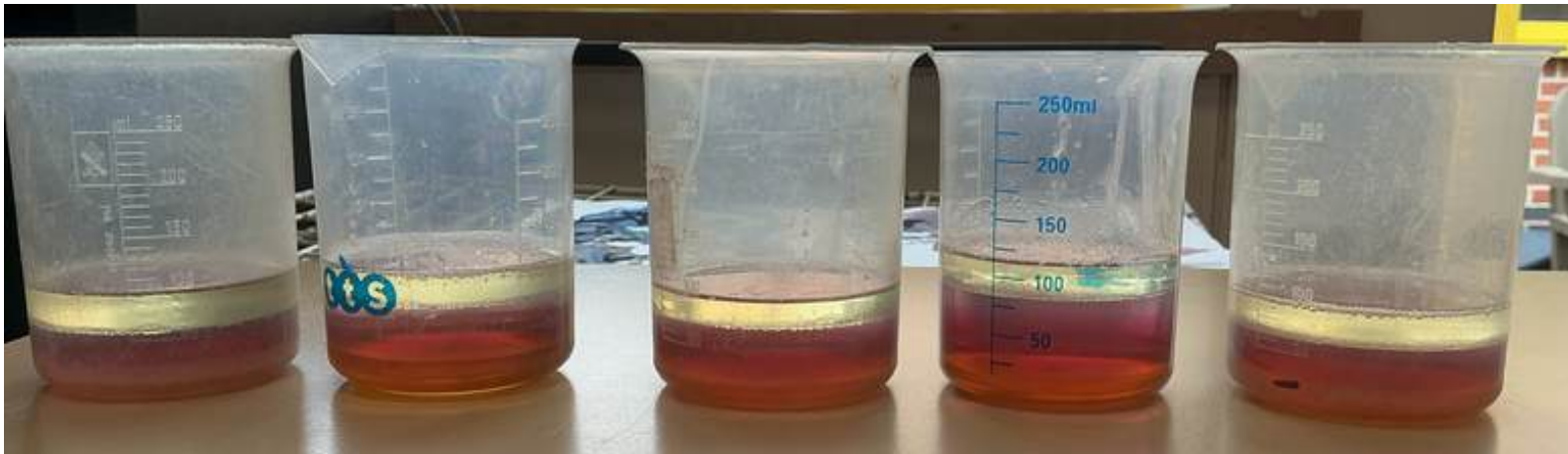
Year 4 had an amazing time at the Nottingham Tennis Open on Monday. We were able to watch some professional players in a match before practising our own tennis and padel skills across three sessions. The children were exceptionally well behaved throughout the day, and we received many compliments from staff and members of the public, who said that the children were brilliant representatives and 'a credit' to our school! Thank you once again to our local councillor, Hari Om, and FOGSA for kindly funding the coach that enabled us to take part in this wonderful trip.



THIS WEEK'S HIGHLIGHTS

Year 5/6

Year 5/6 have been busy carrying out an investigation into materials and their properties. We added liquids of different densities to containers and observed the changes that happened over time. Eventually, all the containers settled into layers according to the density of each liquid, as predicted. We then predicted what would happen when different solids were dropped into the containers and identified which "layer" each one would stop at.



FOGSA NEWS

DISCO NIGHT

ENTRY AND SNACK
£3.50

WEDNESDAY 24TH JUNE

EYFS/KS1 KS2
5-5.45PM 6-7PM

PLEASE BRING OWN WATER BOTTLE

TICKETS AVAILABLE ON PARENTPAY FROM MONDAY 8TH JUNE

GREYTHORN
PRIMARY SCHOOL

Flying High Partnership

FOGSA NEWS

Summer Family Picnic

WE WANT YOU!

YEAR GROUP HAMPER.

AS PART OF THIS YEAR'S RAFFLE WE ARE GOING TO FEATURE A HAMPER FROM EACH YEAR GROUP.

THIS HAMPER CAN CONTAIN ITEMS FOR BOTH ADULTS AND CHILDREN. ALL ITEMS MUST BE NON-PERISHABLE AND NOT CONTAIN NUTS.

IDEAS INCLUDE; TOYS, GAMES, GIFT, BEAUTY PRODUCTS, VOUCHERS, FOODS, DRINKS, CRAFTS.

PLEASE LIASE WITH YOUR FOGSA YEAR GROUP REPRESENTATIVE AND DONATE BY 1ST JULY.



Summer Family Picnic 10th July 5-7pm

WE WANT YOU!

ARE YOU PART OF A BAND? SINGER OR MUSICIAN?

WE WOULD LOVE TO FEATURE YOU AT OUR SUMMER PICNIC WITH A SHORT PERFORMANCE TO KEEP THE PARTY GOING!

EMAIL FOGSAEMAIL@GMAIL.COM IF YOU ARE INTERESTED!

ALL AGES WELCOME TO PERFORM



Summer Family Picnic



FOOD · MUSIC · BAR · GAMES
INFLATABLES · RAFFLE
GLITTER STATION · TOMBOLA
EMERGENCY SERVICES
AND MUCH MORE!

Free Entry

10th July 2026
5-7pm

Save the Date





SPRING SUMMER MENU 2024



Week commencing

20th April, 11th May,
1st June, 22nd June,
13th July

	Monday	Tuesday	Wednesday	Thursday	Friday
Red Option	Impossible™ 'Chicken' nuggets' <small>Gluten Soya</small> with potato balls, sweetcorn & tomato ketchup	Chicken bolognese OR Katerveg™ bolognese <small>Soya</small> with spaghetti, <small>Gluten Mustard Soya</small> crusty bread <small>Gluten Sesame</small> & vegetable sticks	Venison, Beef & Pork sausage <small>Gluten Sulphur Dioxide</small> OR Linda McCartney™ Sausage <small>Gluten Soya Sulphur Dioxide</small> with Yorkshire pudding. <small>Gluten Egg Milk</small> mash, broccoli, peas & gravy	Southern fried Quorn fillet <small>Gluten</small> with oven chips, green beans & mayonnaise <small>Egg</small>	Fish finger wrap <small>Gluten Fish</small> OR Fishless finger wrap <small>Gluten</small> with jacket wedges, sweetcorn & baked beans
Calendar Icon	Available daily: Sliced bread <small>Gluten Soya</small> & fresh fruit				
Pudding	Ice cream tub <small>Milk</small>	Doughnuts <small>Gluten Eggs Milk Sesame Soya</small>	Chocolate cookie <small>Gluten</small>	Iced fairy cake <small>Gluten Egg</small>	Golden syrup flapjack <small>Gluten</small>





TODDLER STAY AND PLAY

A VERY WARM WELCOME

AWAITS YOU

AND YOUR CHILDREN

For Parents/Carers with Children (age 0 – 4 yrs) living in the
local community

Come and join us for playtime, chat and refreshments



Free of Charge

Friday
9.15AM – 10.15AM

26th June
19th July



COMMUNITY NEWS

HELP US WIN £1,000 FOR OUR LIBRARY

Nominate us and you could win a £100 gift card!
nationalbooktokens.com/schools-prize



SCAN ME

NATIONAL BOOK tokens

In association with

Read for Good

GO ALL IN.

National Year of Reading 2026

#rebuildthelibrary



St Paul's Boundary Road

FREE!

Messy Church

Arts and crafts

Bible stories

Singing together

Meal included!

Lots of fun for children of all ages and their parents and carers. Come along and get creative!

Saturday 20th June
3:45pm - 5:30pm

Scan to book your FREE place >>>

or visit stpaulsboundaryroad.churchsuite.com/events/hzib5oja

St Paul's Church, Boundary Road, NG2 7DB



ATTENTION



ATTENTION

Parking

Please do not use **Hyde Park Close** to park on or for dropping off. The road does not have a pavement and it is not safe to be manoeuvring around pedestrians in such a small space. The same applies to **Uppingham Crescent** and **Regents Park Close**. Please do not park on this road or on the pavement. Pavement parking leaves very little space for school pedestrians, making it unsafe, and parked cars are also causing difficulties for vehicles trying to pass along the road.

ATTENTION



ATTENTION



Aspiration. Confidence. Creativity. Kindness. Pride. Respect. Resilience. Responsibility



COMMUNITY NEWS



Coffee Morning

Fundraising for West Bridgford South
Trent Girlguiding for Chamboree 2026



Saturday 4th July 2026, 9am- 12pm

West Bridgford Methodist Church
on the corner of Musters Road and Patrick Road

Cakes – Teas – Coffee – Breakfast Baps

Donations of Cakes – Homemade or Shop Bought
please (provide ingredient details)



What Parents & Educators Need to Know about

ROBLOX

WHAT ARE THE RISKS?

Roblox is an online platform where users can play and create games known as 'experiences' made by other users. Roblox has a large UK audience. ITV News has reported that millions of people in Britain use the platform regularly, with children forming a significant proportion of its users. The sheer scale of it makes it extremely difficult to moderate effectively, creating risks for unsupervised children, though a June 2026 update has improved things greatly.

A PLATFORM RATHER THAN A GAME

Roblox differs from traditional video games in that it hosts millions of user-created experiences rather than a fixed set of developer-produced content. Each experience is self-rated by its creator rather than independently age-rated in advance, as is the case with PEGI-rated games. With millions of user-created experiences, moderation is largely automated which means that inappropriate content may reach younger players and have a harmful effect.

RISK OF ADDICTION

Roblox encourages repeated and extended play. Many experiences are made of short tasks, rewards, and progression systems that can prompt users to keep playing for longer periods of time. Some games also use reminders, daily rewards, or timed events to encourage frequent logins. These designs can make it difficult to stop playing. Spending long periods online may affect sleep, schoolwork, or other activities if boundaries are not in place.

IN-GAME SPENDING

Roblox is free to play, but many experiences and cosmetics include optional purchases using Robux, the platform's virtual currency, to get advantages in games. This business model is common across online games, but reporting has highlighted cases where children have spent large amounts of money unintentionally or without understanding the real-world cost.

MATURE CONTENT

With much of Roblox's moderation done through AI and creators self-certifying suitability, inappropriate content frequently appears on the platform. Some experiences may include content intended for older players. As of June 2026, Roblox defaults to only showing games from trusted developers to under 13s, following tests with older players to filter out riskier content. But these automated systems are not infallible, and younger players may encounter content you deem unsuitable.

COMMUNICATION WITH OTHER USERS

Roblox includes text and voice features that allow players to chat in shared game spaces. While the platform uses automated filters and moderation tools, media investigations have found that inappropriate and potentially harmful messages can still get through. There are risks that children could be targeted by groomers. In a June 2026 update, Roblox changed its default settings to prevent under 13s from chatting entirely, with gradual relaxation of restrictions between the ages of 13 and 18. The platform plans to use facial age-estimation technology to enforce these rules.

Advice for Parents & Educators

USE PARENTAL CONTROLS

Roblox's parental controls provide an important starting point. Linking a child's account to an adult account allows parents to apply spending controls, limit communication features, and review recent activity. Regular supervision, use of parental controls, and conversations with children about what they see online can help reduce the risk of exposure to inappropriate content.

CONSIDER LIMITING OR DISABLING CHAT

Although Roblox has introduced tighter age-based chat restrictions, some parents and educators may prefer to disable chat entirely to avoid the risk of stranger danger. This is the default for under 13s, but can be applied for any account up to the age of 18. Children can still play games while communicating with friends they know through other platforms, such as Discord.

PLAY TOGETHER WHERE POSSIBLE

Playing Roblox with a child can help adults understand the types of experiences available, how monetisation works, and how children interact online. This shared engagement can also make it easier for children to raise concerns if something feels wrong. Parents and educators should monitor all games played on Roblox due to its largely self-rating nature.

ENCOURAGE OPEN CONVERSATIONS

Many Roblox experiences are creative and age appropriate, and for many children, the platform is an important way to associate with friends. Rather than banning it outright, parents and educators should talk openly with children about online safety, spending, and how to respond to inappropriate behaviour.

Meet Our Expert

Alan Martin is a technology journalist who has written for publications including Wired, TechRadar, The Telegraph, The Evening Standard, The Guardian and The New Statesman.



#WakeUpWednesday

The National College