



GREYTHORN PRIMARY

"Engaging hearts, equipping minds, opening doors"

Summer Term

Weekly Newsletter

12th June 2026

DATES FOR THE DIARY

MONDAY 15th JUNE

Nottingham Open Tennis - Year 4

FRIDAY 19th JUNE

8.15am - 8.45am Fathers' Day
Reading Cafe
School Photograph Day

WEDNESDAY 24th JUNE

Summer Disco
5pm - 5.45pm FS & KS1
6pm - 7pm KS2

FRIDAY 26th JUNE

9.15am Toddler Stay & Play

TUESDAY 30th JUNE

1.30pm-3.15pm KS2 Sports Day

WEDNESDAY 1st JULY

1.30pm - 3.15pm KS1 Sports Day

FRIDAY 3rd JULY

Non Uniform Day - Year 1 to 6
Manor Farm - Foundation Stage

MONDAY 6th & WEDS 8th JULY

Year 5/6 Performance

FRIDAY 10th JULY

9.15am Toddler Stay & Play
5pm - 7pm Summer Picnic

TUESDAY 14th JULY

2.30pm Summer Concert
6.30pm Summer Concert



A MESSAGE FROM YOUR HEADTEACHER

Dear Parents and Carers,

A highlight of the week was the Year 1/2 trip to Bestwood Country Park—what an adventure! Despite the wet and soggy weather at times, spirits remained high and the children embraced every moment with enthusiasm, resilience and smiles.

It was also a real pleasure to welcome our September 2026 new starters (Reception classes) for their very first transition morning. It was lovely to see them exploring their soon-to-be new class spaces and meeting their future class teachers and class friends. We look forward to them joining our school community.

Across the school, it has been wonderful to see such positive attitudes, with children continuing to demonstrate and share the Greythorn Values.

Mrs Carpenter

SUNDAY 19th - 23rd JULY

Year 6 - York Residential

FRIDAY 24th July

Last Day at School

MONDAY 27th July

INSET Day

OFSTED PARENT VIEW



OFSTED Parent view

We really value your feedback about our school. We are always looking to improve our service to ensure that we are meeting yours and your children's needs.

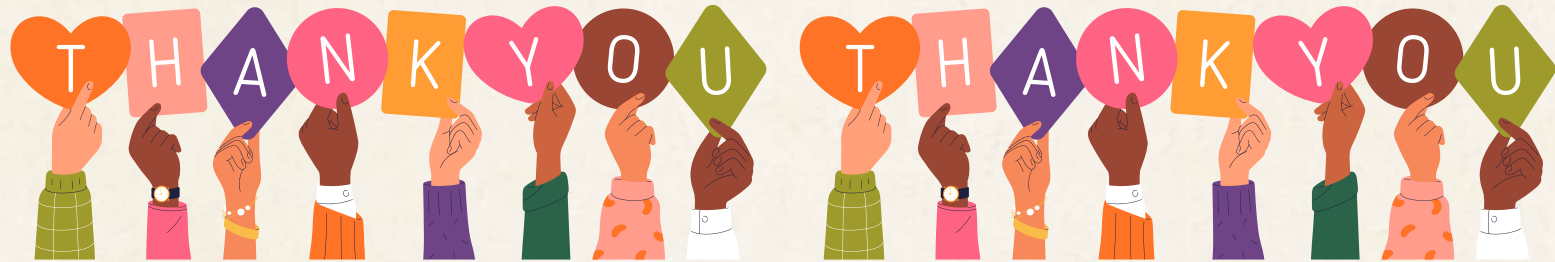
We kindly invite you to complete the Ofsted Parent View survey. This gives you the opportunity to share your views on your child's experience and helps us continue to improve.

Please follow the link below to register and complete the survey:

<https://parentview.ofsted.gov.uk/login?destination=/give-your-view>

Your feedback is important to us and we appreciate you taking the time to complete this.

Thank you for your continued support.



FATHERS' DAY READING CAFE

SAVE THE DATE

Invitation
to all father figures
8.15am – 8.45am
Friday 19th June 2026



Come along and enjoy reading a book with your child. We look forward to welcoming all dads, granddads, uncles, carers, and other special father figures for a lovely shared reading session.

THIS WEEK'S HIGHLIGHTS

Foundation

The children have spent this week planning and creating their clay minibeast models. They began by exploring clay, experimenting with how to change its shape, add texture, and join different parts securely. Using these newly acquired skills, the children then applied their ideas to design and build their own models. Next, they will carefully follow their plans to paint their minibeasts and finally evaluate their finished designs.



THIS WEEK'S HIGHLIGHTS

Year 1/2

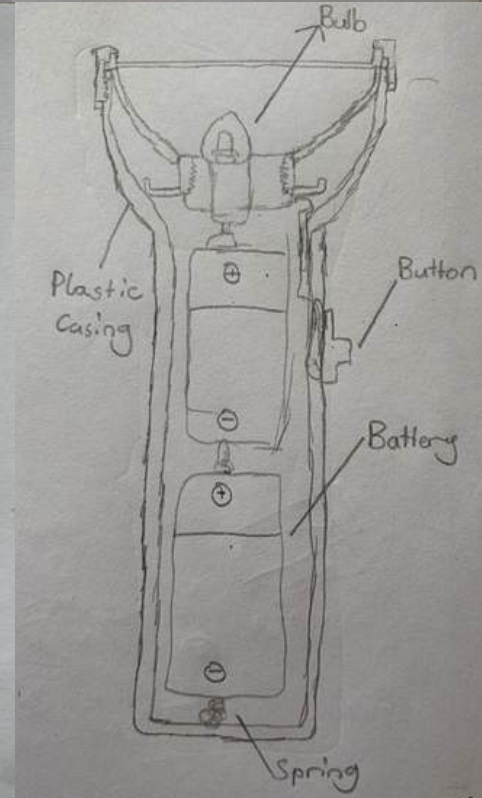
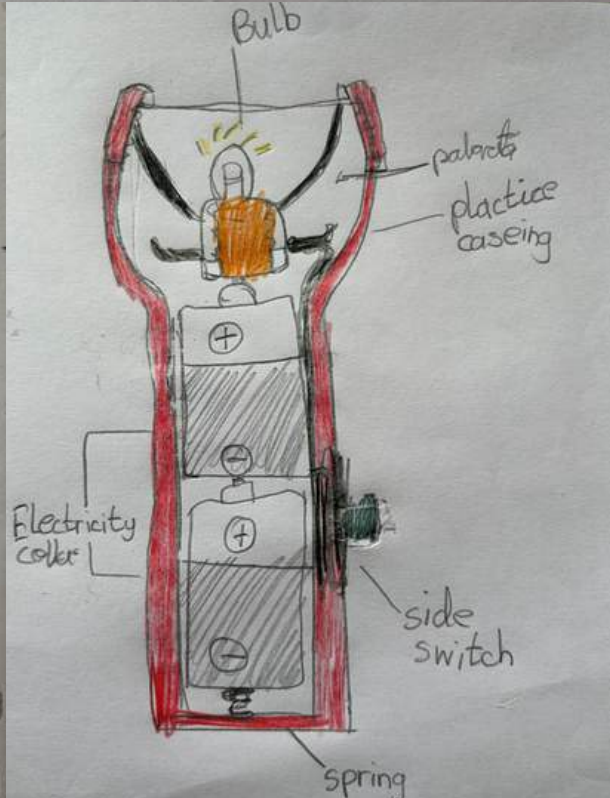
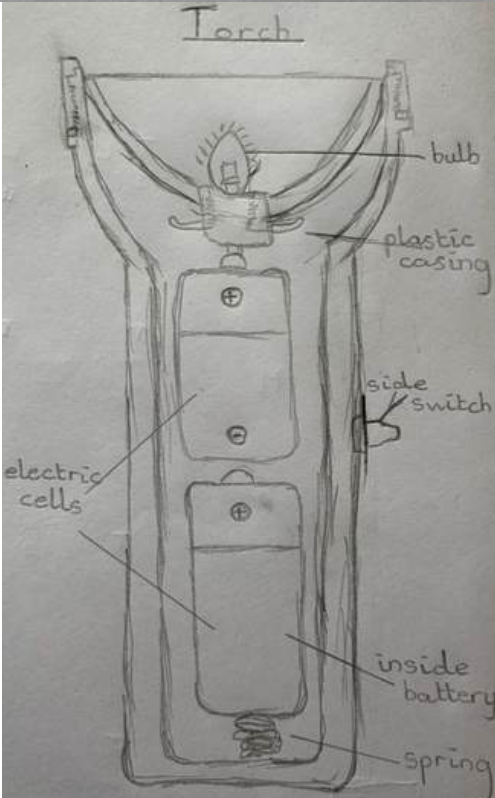
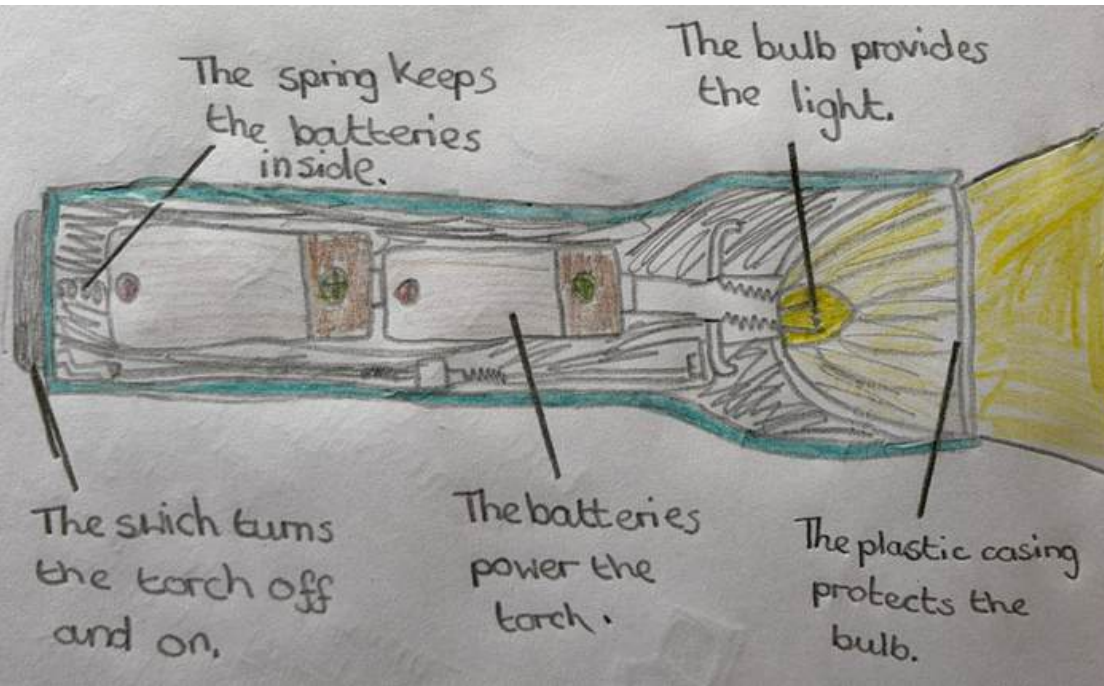
Year 1/2 had a fantastic time on our trip to Bestwood Country Park this week. For the first part of the day, we enjoyed creating animal homes for hedgehogs, owls, birds and more using sticks, leaves and whatever we could find in the woods! Then we enjoyed a 'plant adventure' through the grounds in the afternoon looking at different trees and searching for minibeasts in the woodland and the grassland. All of the children had a great time! Thank you to all of the parent volunteers; we couldn't do it without you!



THIS WEEK'S HIGHLIGHTS

Year 3/4

Throughout this term, Year 3/4 will be busy designing and making lighthouse lamps in DT. This week, the children have been learning all about torches and how they work. They drew and labelled some fantastic cross-sectional diagrams, identifying the different components and exploring the important role that each part plays. Over the next few weeks, the children will use this knowledge to design and create their very own lamp in the shape of a lighthouse. We are really looking forward to seeing their brilliant ideas come to life!



FOGSA NEWS

Summer Family Picnic

WE WANT YOU!

YEAR GROUP HAMPER.

AS PART OF THIS YEAR'S RAFFLE WE ARE GOING TO FEATURE A HAMPER FROM EACH YEAR GROUP.

THIS HAMPER CAN CONTAIN ITEMS FOR BOTH ADULTS AND CHILDREN. ALL ITEMS MUST BE NON-PERISHABLE AND NOT CONTAIN NUTS.

IDEAS INCLUDE; TOYS, GAMES, GIFT, BEAUTY PRODUCTS, VOUCHERS, FOODS, DRINKS, CRAFTS.

PLEASE LIASE WITH YOUR FOGSA YEAR GROUP REPRESENTATIVE AND DONATE BY 1ST JULY.



Summer Family Picnic 10th July 5-7pm

WE WANT YOU!

ARE YOU PART OF A BAND? SINGER OR MUSICIAN?

WE WOULD LOVE TO FEATURE YOU AT OUR SUMMER PICNIC WITH A SHORT PERFORMANCE TO KEEP THE PARTY GOING!

EMAIL FOGSAEMAIL@GMAIL.COM IF YOU ARE INTERESTED!

ALL AGES WELCOME TO PERFORM



Summer Family Picnic



FOOD · MUSIC · BAR · GAMES
INFLATABLES · RAFFLE
GLITTER STATION · TOMBOLA
EMERGENCY SERVICES
AND MUCH MORE!

Free Entry

10th July 2026
5-7pm

Save the Date



FOGSA NEWS

DISCO NIGHT



ENTRY AND SNACK
£3.50

WEDNESDAY 24TH JUNE

EYFS/RS1 RS2
5-5.45PM 6-7PM

PLEASE BRING OWN WATER BOTTLE



TICKETS AVAILABLE ON PARENTPAY FROM MONDAY 8TH JUNE

FATHER'S DAY GIFTS



Mugs with coffee & chocolate
£5 each



No. 1 Dad
Trophy Cookie
£2.50



Socks £2.50 each



Shortbread Football
Biscuit Tin £5

LIMITED STOCK. ORDER NOW ON PARENTPAY UNTIL 12TH JUNE



Aspiration. Confidence. Creativity. Kindness. Pride. Respect. Resilience. Responsibility





Week commencing

13th April, 4th May,
15th June, 6th July

SPRING SUMMER MENU 2020



	Monday	Tuesday	Wednesday	Thursday	Friday
Red Option	<p>Cheesy tomato pasta <i>Gluten Milk Mustard Soya</i> with garlic bread <i>Gluten Milk Soya</i> & vegetable sticks</p>	<p>Pinwheel pizza <i>Gluten Milk</i> with diced potato & mixed salad</p>	<p>Beef burger <i>Gluten Sesame Sulphur dioxide</i> OR Southern Style Quorn Burger <i>Gluten Sesame</i> with potato balls & crunchy vegetable sticks</p>	<p>Venison, Beef & Pork sausage <i>Gluten Sulphur Dioxide</i> OR Linda McCartney™ sausage <i>Gluten Soya Sulphur Dioxide</i> with mashed potato & gravy</p>	<p>Fish <i>Gluten Fish</i> OR Fishless fingers <i>Gluten</i> with chips, peas & tomato ketchup</p>
	<p>Available daily: Sliced bread <i>Gluten Soya</i> & fresh fruit</p>				
Pudding	<p>Fruit ice lolly</p>	<p>Iced school cake <i>Gluten Egg Milk</i> & custard <i>Milk</i></p>	<p>Chocolate crispie <i>Gluten</i></p>	<p>Yoghurt <i>Milk</i></p>	<p>Banana mousse <i>Milk</i> with a shortbread crumb <i>Gluten</i></p>





TODDLER STAY AND PLAY

A VERY WARM WELCOME

AWAITS YOU

AND YOUR CHILDREN

For Parents/Carers with Children (age 0 – 4 yrs) living in the
local community

Come and join us for playtime, chat and refreshments



Free of Charge

Friday
9.15AM – 10.15AM

26th June
19th July



COMMUNITY NEWS

Parking

Please do not use **Hyde Park Close** to park on or for dropping off. The road does not have a pavement and it is not safe to be manoeuvring around pedestrians in such a small space. The same applies to **Uppingham Crescent** and **Regents Park Close**. Please do not park on this road or on the pavement. Pavement parking leaves very little space for school pedestrians, making it unsafe, and parked cars are also causing difficulties for vehicles trying to pass along the road.

HELP US WIN £1,000 FOR OUR LIBRARY

Nominate us and you could win a £100 gift card!

nationalbooktokens.com/schools-prize

NATIONAL BOOK tokens

In association with

Read for Good

GO ALL IN.

SCAN ME

#rebuildthelibrary

National
Year of
Reading
2026

COMMUNITY NEWS

Waterside Bridge Community Celebration

Sunday 14 June
10am-4pm



Come along to a **FREE** fun day to celebrate Nottingham's new walking and cycling bridge

- ◆ Crafts, games and inflatables
- ◆ Bridge building competitions
- ◆ Have a go at sports activities
- ◆ Food and drink



Get there via NCT 45 on the city side or 90X, 11, 11B or 11C on the Lady Bay side



Blue badge parking available



Cycle parking available

transportnottingham.com/bridgefunday



Funded by
UK Government



Nottingham
City Council

10 Top Tips for Parents and Educators

BUILDING SCHOOL-READY LANGUAGE SKILLS

Oral language is fundamental to children's learning, literacy, and social and emotional development, with long-term impacts. As language develops rapidly between the ages of three and six, early, evidence-based support is essential. This guide offers practical ways to help the children in your care become confident communicators, including through proven approaches such as the DfE-funded NELI programmes available to settings in England.

1 BUILD ORAL LANGUAGE

Support children to use language, not just hear it. Give them the time to talk, respond, ask questions, and share their ideas. Everyday conversations, shared activities, and reading together help children practise both speaking and listening. At nursery or school, programmes such as NELI can help build their vocabulary, storytelling, attention, and listening skills, helping children grow in confidence as communicators.

2 SUPPORT LISTENING SKILLS

Help children to listen and follow simple instructions during everyday routines. Break instructions down into short, manageable steps and check their understanding. For example, say, "Please put your coat on," rather than giving them several instructions at once. Strong listening skills support learning, attention, and participation at school.

3 GROW THEIR VOCABULARY

Talk with children about the world around them, naming objects, actions, and feelings. Use a wide range of words during everyday activities such as shopping, cooking, and playing. Repeating and explaining new words help children understand and use vocabulary more confidently, supporting their comprehension and communication.

4 SHARE STORIES TOGETHER

Read storybooks together regularly and talk about characters, events, and illustrations. Ask simple questions such as "What's happening here?" and validate children's responses with positive feedback. Acting out stories together, asking open questions, and giving children the chance to be the storyteller can all support their narrative skills and confidence.

5 NAME DIFFERENT FEELINGS

Help children learn to express themselves by talking about different feelings and naming them clearly, such as happy, sad, or angry. Visuals and role play can support their understanding of this. Being able to express their feelings verbally helps children build positive relationships with adults and peers, reduces frustration, and supports their social development as they prepare for school.

6 WORK WITH SETTINGS

Strong communication between home and the nursery, school, or early years setting can help children feel more confident and supported. Parents can visit the setting with their child before they start, helping them become familiar with the environment and key adults. Educators can share relevant information with families and colleagues, so each child's needs are understood. Newsletters can also help families continue language learning at home.

7 SPOT LANGUAGE NEEDS

Children develop their language and communication skills at different rates, so early conversations between home and settings are important. If parents have concerns, they should speak to their child's nursery, school, or early years setting. Educators can use tools such as LanguageScreen, included in the NELI programmes, to build a profile of a child's speaking and listening skills and help identify suitable support.

8 EVIDENCE-BASED SUPPORT

Prioritise language and literacy approaches that are underpinned by robust research evidence. Evidence-based programmes help ensure children receive support that is more likely to make a meaningful difference. The Education Endowment Foundation (EEF) provides guidance on the strength of evidence behind different strategies, supporting informed decision-making and effective use of school time and resources.

9 MEET INDIVIDUAL NEEDS

Settings can use evidence-based assessment tools to understand children's language skills and identify where support may be needed. These tools support SEND reforms, and strengthen whole-setting language development, helping children receive support that reflects their individual communication needs.

10 TAKE PART IN RESEARCH

Research trials can give schools, early years settings, and families a valuable opportunity to contribute to evidence construction and future policy. Parents may be asked to give consent, share feedback, or support activities at home, while educators help deliver and monitor approaches in practice. The EEF often has trials that settings can join, including whole-class oral language programmes designed to support children's communication development.

Meet Our Expert

OxEd is a University of Oxford spinout company specialising in early language and literacy assessment and intervention. They are the delivery team for the Nuffield Early Language Intervention (NELI) programme in reception, funded by the Department for Education for schools in England, and for NELI Preschool, which supports nurseries to strengthen children's early language development through evidence-based practice.



See full reference list on our website