



GREYTHORN PRIMARY

"Engaging hearts, equipping minds, opening doors"

Summer Term

Weekly Newsletter

22nd May 2026

DATES FOR THE DIARY

FRIDAY 5th JUNE

9.15am Toddler Stay & Play

WEDNESDAY 10th & THURSDAY 11th JUNE

Bestwood Country Park Year 1/2 (10th Oak & Willow / 11th Maple)

MONDAY 15th JUNE

Nottingham Open Tennis - Year 4

FRIDAY 19th JUNE

8.15am - 8.45am Fathers' Day Reading Cafe
9.15am Toddler Stay & Play

WEDNESDAY 24th JUNE

Summer Disco

TUESDAY 30th JUNE

KS2 Sports Day

WEDNESDAY 1st JULY

KS1 Sports Day

FRIDAY 3rd JULY

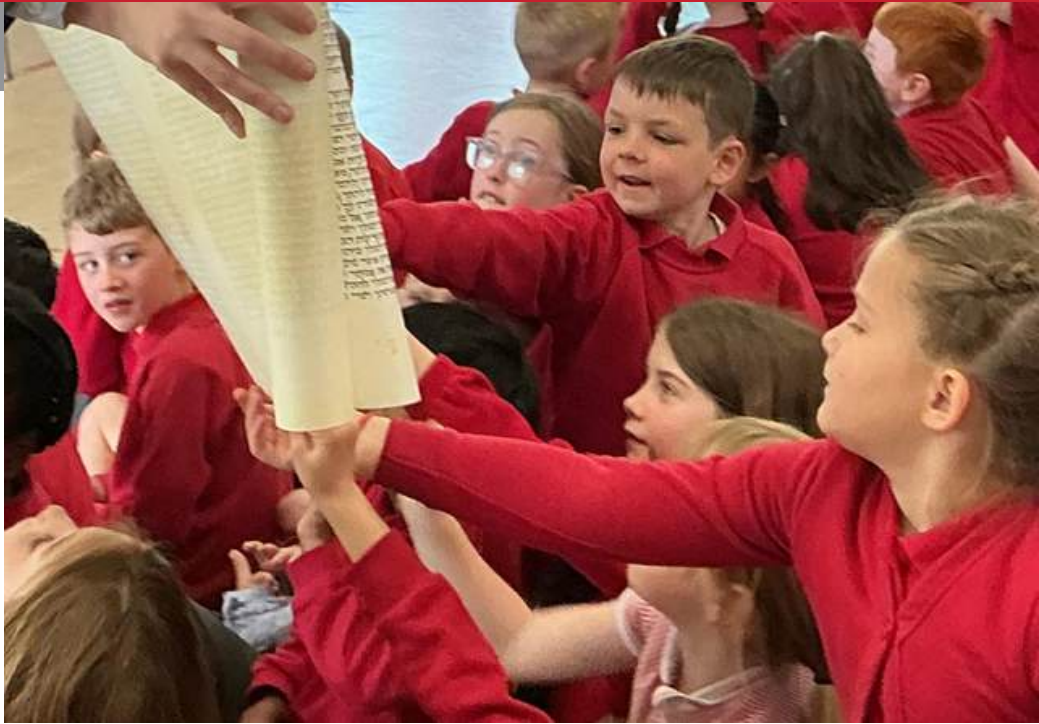
Non Uniform Day - Year 1 to 6
Manor Farm - Foundation Stage

TUESDAY 14th JULY

Summer Concert

MONDAY 6th & WEDNESDAY 8th JULY

Year 5/6 Performance



A MESSAGE FROM YOUR HEADTEACHER



Dear Parents and Carers,

As we come to the end of another busy half term, we're so proud of all the fantastic learning, effort and achievements we have seen across the school. We hope you have a lovely half term, enjoy the sunny weather and we look forward to welcoming everyone back on Monday 1st June.

Mrs Carpenter



DATES FOR THE DIARY

2025/26 TERM DATES

FRIDAY 10th JULY

Summer Family Picnic

SUNDAY 19th - 23rd JULY

Year 6 - York Residential

Summer Term

13 April - 21 May 2026

1 June - 24 July 2026

INSET: 22 May, 27 July

STAFF NEWS

Staffing

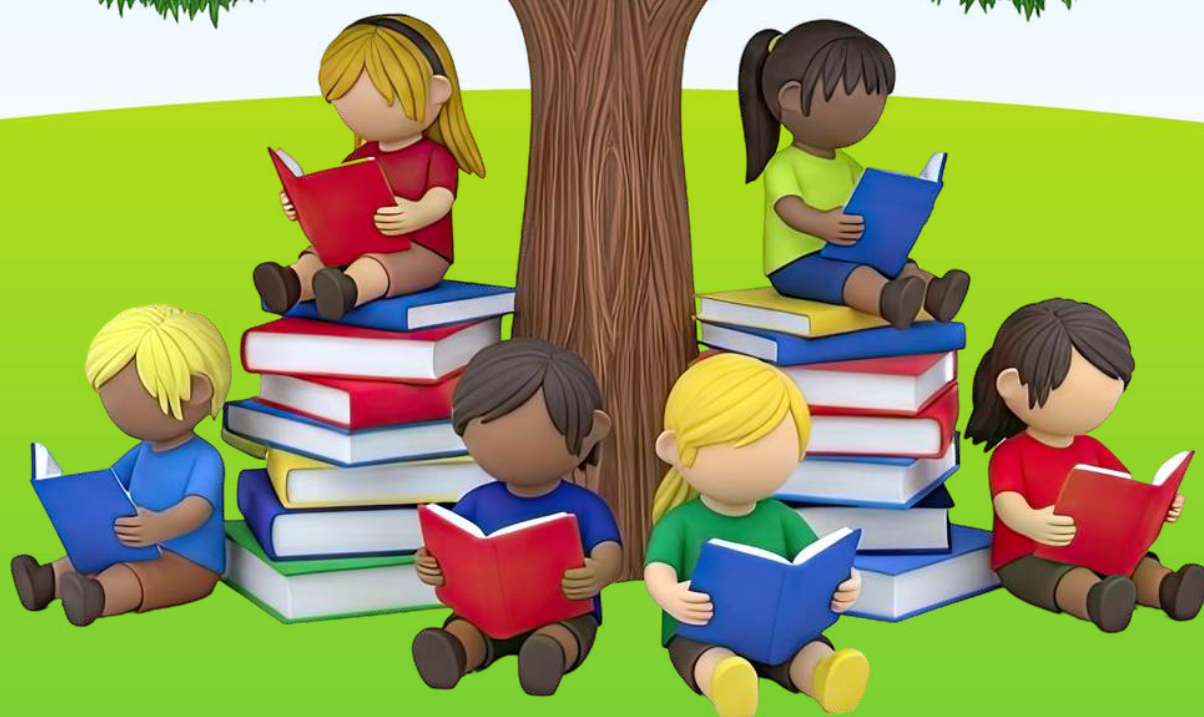
We have said a fond farewell to Mr Ahmed who has now left us at half term for pastures new. Sycamore class will continue in the safe and capable hands of Mrs Cox and Mrs Stanley. Mrs Stanley is familiar within the school, having worked with us for some time and already knows the Sycamore class well. We wish Mr Ahmed all the very best.

FATHERS' DAY READING CAFE

SAVE THE DATE

Invitation to all father figures
8.15am – 8.45am
Friday 19th June 2026

Come along and enjoy reading a book with your child.
We look forward to welcoming all dads, grandads, uncles,
carers, and other special father figures for a lovely shared
reading session.

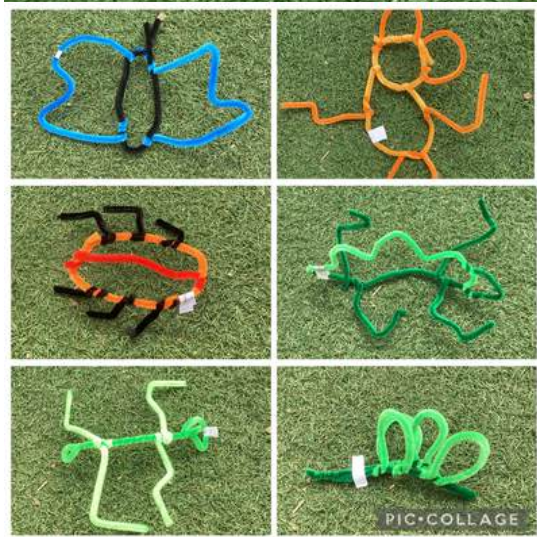


THIS WEEK'S HIGHLIGHTS

Foundation

The children have been super creative this week, crafting their own colourful pipe-cleaner animals inspired by the imaginative work of Luca Boscardin and his animal-factory style. Their models have ranged from tiny twisting insects to bold, bright jungle creatures, each one showing off the children's growing confidence in sculptural making and imaginative design.

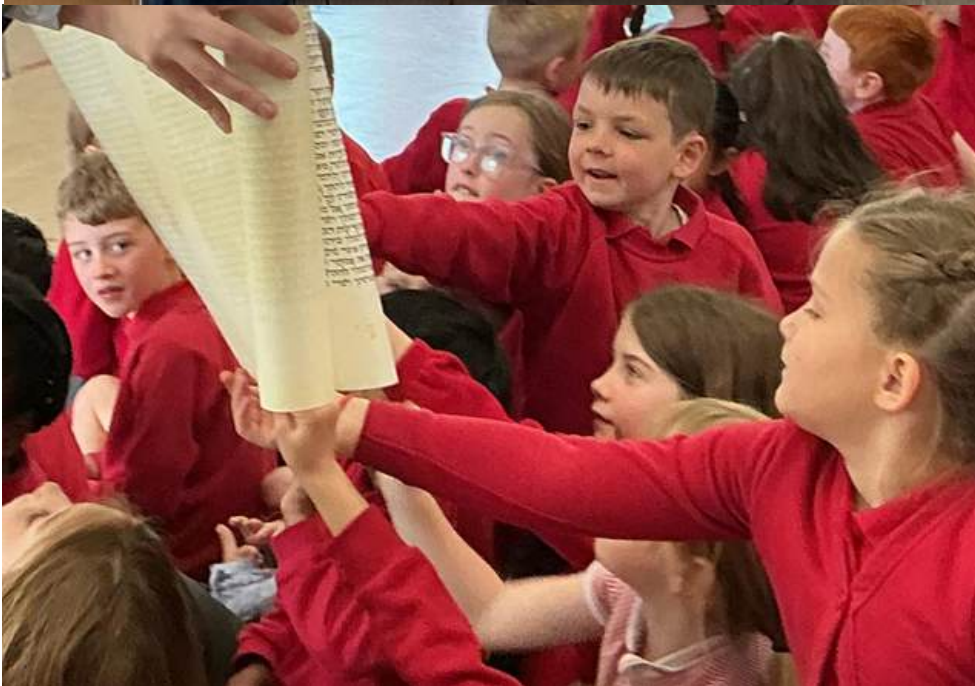
They explored bending, twisting and shaping techniques, experimented with colour combinations, and even worked together to help bring each other's ideas to life.



THIS WEEK'S HIGHLIGHTS

Year 1/2

Year 1/2 enjoyed a visit from Rabbi Lent at the end of last week. We learnt all about the synagogue and special events in Judaism. The Rabbi was very impressed with all of their prior knowledge!



THIS WEEK'S HIGHLIGHTS

Year 3/4

In Year 3/4, we have been sculpting our melting clocks inspired by the artwork of Salvador Dalí. The children have carefully shaped, moulded and painted their sculptures, showing fantastic creativity and attention to detail throughout the process. They explored how to make their clocks appear soft and "melting", just like Dalí's famous surrealist artwork. They look absolutely amazing and we are so proud of the effort and imagination that everyone has shown!



THIS WEEK'S HIGHLIGHTS

Year 5/6

Year 5/6 have finished their Viking amulet sculptures. We made sure to demonstrate a range of techniques, including weaving, braiding, spirals, spheres and twists – to name a few! As you can see, we have some seriously talented sculptors!



FOGSA NEWS



Summer Family Picnic

FOOD · MUSIC · BAR · GAMES
INFLATABLES · RAFFLE
GLITTER STATION · TOMBOLA
EMERGENCY SERVICES
AND MUCH MORE!

Free Entry

10th July 2026
5-7pm

Save the Date



Summer Family Picnic 10th July 5-7pm

WE WANT YOU!

ARE YOU PART OF A BAND?
SINGER OR MUSICIAN?

WE WOULD LOVE TO FEATURE YOU AT OUR
SUMMER PICNIC WITH A SHORT
PERFORMANCE TO KEEP THE PARTY GOING!

EMAIL FOGSAEMAIL@GMAIL.COM IF YOU ARE
INTERESTED!

ALL AGES WELCOME
TO PERFORM



Summer Family Picnic

WE WANT YOU!

YEAR GROUP HAMPER.

AS PART OF THIS YEAR'S RAFFLE WE ARE
GOING TO FEATURE A HAMPER FROM EACH
YEAR GROUP.

THIS HAMPER CAN CONTAIN ITEMS FOR BOTH
ADULTS AND CHILDREN. ALL ITEMS MUST BE
NON-PERISHABLE AND NOT CONTAIN NUTS.

IDEAS INCLUDE; TOYS, GAMES, GIFT, BEAUTY
PRODUCTS, VOUCHERS, FOODS, DRINKS,
CRAFTS.

PLEASE LIASE WITH YOUR FOGSA YEAR GROUP
REPRESENTATIVE AND DONATE BY 1ST JULY.





Week commencing

20th April, 11th May,
1st June, 22nd June,
13th July

SPRING SUMMER MENU



	Monday	Tuesday	Wednesday	Thursday	Friday
Red Option	Impossible™ 'Chicken' nuggets' <small>Gluten Soya</small> with potato balls, sweetcorn & tomato ketchup	Chicken bolognese OR Katerveg™ bolognese <small>Soya</small> with spaghetti, <small>Gluten Mustard Soya</small> crusty bread <small>Gluten Sesame</small> & vegetable sticks	Venison, Beef & Pork sausage <small>Gluten Sulphur Dioxide</small> OR Linda McCartney™ Sausage <small>Gluten Soya Sulphur Dioxide</small> with Yorkshire pudding <small>Gluten Egg Milk</small> mash, broccoli, peas & gravy	Bacon chop OR Southern fried Quorn fillet <small>Gluten</small> with oven chips, green beans & mayonnaise <small>Egg</small>	Fish finger wrap <small>Gluten Fish</small> OR Fishless finger wrap <small>Gluten</small> with jacket wedges, sweetcorn & baked beans
	Available daily: Sliced bread <small>Gluten Soya</small> & fresh fruit				
Pudding	Ice cream tub <small>Milk</small>	Doughnuts <small>Gluten Eggs Milk Sesame Soya</small>	Chocolate cookie <small>Gluten</small>	Iced fairy cake <small>Gluten Egg</small>	Golden syrup flapjack <small>Gluten</small>





TODDLER STAY AND PLAY

A VERY WARM WELCOME

AWAITS YOU

AND YOUR CHILDREN

For Parents/Carers with Children (age 0 – 4 yrs) living in the local community

Come and join us for playtime, chat and refreshments



Free of Charge

Friday

9.15AM – 10.15AM

5th June

19th June



COMMUNITY NEWS



Parking

Please do not use **Hyde Park Close** to park on or for dropping off. The road does not have a pavement and it is not safe to be manoeuvring around pedestrians in such a small space. The same applies to **Uppingham Crescent** and **Regents Park Close**. Please do not park on this road or on the pavement. Pavement parking leaves very little space for school pedestrians, making it unsafe, and parked cars are also causing difficulties for vehicles trying to pass along the road.



Notts County Foundation

MAY HOLIDAY CLUB

Every day 9am - 3pm
Tuesday 26th May - Friday 29th May 2026

SCAN HERE

£15.00 per day
Book all 4 days for £50.00 using code NOTTSMAY4FOR50

Multi-sports | Themed days | Crafts & activities

www.nottscountyfoundation.org.uk

Themed days

Day	Theme
Monday	Closed - Bank Holiday
Tuesday	Football
Wednesday	Sports Day
Thursday	Olympics
Friday	Creativity Day

Each day will consist of a mixture of Sports, Games and Craft activities.

Notts County Foundation

www.nottscountyfoundation.org.uk



Aspiration. Confidence. Creativity. Kindness. Pride. Respect. Resilience. Responsibility



COMMUNITY NEWS



GET 10% OFF YOUR BOOKING WITH THE CODE BELOW

"SCHOOLSOUT26"

OPEN TO THE PUBLIC, WEEKENDS AND SCHOOL HOLIDAYS

Terms & Conditions apply

Notts
Outdoors

Nottinghamshire
County Council

Mill Waters
Parks and Reservoirs

COMMUNITY

SHERWOOD WEST BRIDGFORD

HOLIDAY Studio

Macademia
NUTS ABOUT EDUCATION

HOLIDAY CLUBS

MAY HALF TERM			SUMMER HOLIDAY		
25/05 - 29/05	SHERWOOD	STREET-ART	27/07 - 31/07	WEST BRIDGFORD	ASTROPHYSICS
25/05 - 29/05	WEST BRIDGFORD	ARCHITECTURE & MODEL MAKING	27/07 - 31/07	SHERWOOD	STREET-ART
25/05 - 29/05	WEST BRIDGFORD	ASTROPHYSICS	03/08 - 07/08	WEST BRIDGFORD	CONTENT & MARKETING
			03/08 - 07/08	SHERWOOD	ENGINEERING
			10/08 - 14/08	WEST BRIDGFORD	ENGINEERING
			10/08 - 14/08	SHERWOOD	ART & ARCHITECTURE
			17/08 - 21/08	WEST BRIDGFORD	ART & ARCHITECTURE
			17/08 - 21/08	SHERWOOD	FASHION DESIGN
			24/08 - 28/08	WEST BRIDGFORD	AI LAB
			24/08 - 28/08	SHERWOOD	MATILDA'S ART

10.00 - 15.00 EVERY DAY
£60 PER DAY, WRAPAROUND CARE AVAILABLE

West Bridgford Studio
Thoroton Road
West Bridgford
Nottingham
NG2 5FT

Sherwood Studio
Above The Crimson Tree Café
627 Mansfield Road
Sherwood, Nottingham
NG5 2FX

www.macademia.co.uk

Phone: 0115 646 2016 / 07971292062
Email: info@macademia.co.uk

May half-term at Adventures



Adventures await in the May half-term holiday at King's Mill Reservoir

If you're looking for an amazing experience during the school holiday, head to **Adventures at Mill Waters!** Open daily Sat 23 May – Sun 31 May.

The following activities are available:

- **High Trek +** (£18) ropes courses at 6m & 10m (including tricky obstacles and zip wires)
- **Net Park** (£8)
- **Zip Line Experience** (£12) fly solo or with a friend on our dual 100m wires (Fri, Sat, Sun only)

Get **10% off** activities using the code **'SCHOOLSOUT26'**. *Standard booking terms and conditions apply.* When booking 2 activities for the same person on the same order use **'SAVES'** at checkout to **save £5**

Whether you're planning a family day out, or just looking to burn off some energy, this is the place to be. It's all about fresh air, confidence building, and making lifelong memories.

We're available for:

- birthday parties
- team building days

Group bookings are possible outside of public opening times – contact us for group prices and make use of the sunny days or lighter nights.

📍 Adventures, Kings Mill Reservoir, Sutton-in-Ashfield, NG17 4PA

adventures@nottscc.gov.uk 0115 804 2603

Booking in advance is recommended but walk-ins are also possible if sessions have space

🌐 <https://adventures.nottinghamshire.gov.uk>

Follow us on Facebook & Instagram

MAY HALF-TERM & HOLIDAY CLUBS

ASTROPHYSICS & AI

EXPLORE THE UNIVERSE. BUILD THE FUTURE.

HOLIDAY Studio

INTRODUCING OUR NEW TUTOR

MAY HALF-TERM & SUMMER HOLIDAYS

	ASTROPHYSICS	May Half Term 25/05 – 29/05	Summer Club 27/07 – 31/07
	AI LAB	Summer Club 24/08 – 28/08	

Dr Yousef Abdulghani

Physicist and AI specialist with a PhD in Physics and a Research Fellow at the University of Nottingham.

Dr Abdulghani brings cutting-edge expertise in **astrophysics** and **artificial intelligence**, combining real-world research with inspiring, hands-on learning.

10.00 – 15.00 every day
5 days blocks
Ages 10+
£60 per day

West Bridgford Studio
Thoroton Road
West Bridgford
Nottingham
NG2 5FT

www.macademia.co.uk

Macademia
NUTS ABOUT EDUCATION



Aspiration. Confidence. Creativity. Kindness. Pride. Respect. Resilience. Responsibility



COMMUNITY NEWS



MAY



Holiday Club

HOLIDAY CLUB VENUES

OPERATING FROM TUESDAY 26TH MAY UNTIL FRIDAY 29TH MAY

GREYTHORN PRIMARY SCHOOL- NG2 2GH

MORVEN PARK PRIMARY SCHOOL- NG17 7BT

WILLOW FARM PRIMARY SCHOOL- NG4 4BN

OPERATING FROM TUESDAY 26TH MAY UNTIL THURSDAY 28TH MAY

RADCLIFFE ON TRENT INFANTS- NG12 2GA

<https://tbsport.magicbooking.co.uk>



BOOKINGS
NOW LIVE

8AM-6PM
£26.50

FRIDAY 8AM-5PM
£23.99

BOOK NOW
PAY WITHIN 7 DAYS

What Parents & Educators Need to Know about MINECRAFT

As the best-selling game in history, Minecraft has made a name for itself by empowering audiences of all ages to harness their creativity. Originally an indie hit, it's become a cultural phenomenon with merchandise, spin-off titles, and wider media adaptations. Even if you don't know your Creepers from your Endermen, this guide will explore the risks of Minecraft in 2026 and explain how to support a safe gaming experience for the children in your care.

WHAT ARE THE RISKS?

PUBLIC SERVER COMMUNICATION

Many players enjoy Minecraft with others, including friends and unknown players online. In-game text chat is commonly used to coordinate building projects and gameplay, and this can extend to adding friends to voice chat. While often harmless, this creates risks around contact with strangers, and in some cases server hosts may expose IP addresses (if hosting independently), which raises privacy and security concerns.

GRIEFING BEHAVIOUR

Some players deliberately damage or destroy other players' creations. This behaviour, known as 'griefing', is a form of bullying that can undo hours of effort and cause frustration or distress to affected players. Although many servers treat griefing as a serious offence, enforcement varies. Children who prefer to build independently may feel safer working on private worlds or controlled servers.

ADDICTIVE GAMEPLAY LOOPS

Minecraft's creative focus can make it easy for players to lose track of time. The cycle of gathering resources and building projects can be highly engaging, which may challenge agreed screen-time limits. If not managed effectively, this can impact children's sleep, schoolwork, and real-world social interaction.

SCARY GAME ELEMENTS

Although often compared to digital construction toys, some gameplay modes include hostile creatures with unsettling sounds and sudden encounters. While there is no graphic violence, younger players may still find zombies, spiders, or dark environments frightening. These experiences can lead to anxiety or reluctance to play, depending on the child's age and sensitivity.

IN-GAME SPENDING

Minecraft requires a one-off purchase after a free trial, usually around £15, but additional spending is possible. Players can buy cosmetic content or subscribe to Minecraft 'Realms' for private servers. Without supervision, children may make unintended purchases. Subscription services and add-ons can also increase overall costs over time if not monitored.

ONLINE INTERACTIONS

Playing with others can introduce broader online safety concerns, including exposure to inappropriate language or behaviour. Some players may attempt to move conversations beyond the game, which can increase risks to children's safety and welfare. Children may not always recognise these situations, meaning guidance and ongoing conversations about safe interactions are essential.

Advice for Parents & Educators

CHOOSE SUITABLE GAME MODES

Creative or Peaceful modes remove hostile creatures and reduce the pressure during gameplay. These options allow children to focus on building and exploration without fear of attack. They are also ideal for shared play between adults and children, creating a calmer environment to learn the game and enjoy collaborative projects.

USE PRIVATE SERVERS

Setting up a private server helps control who can join a child's game. Access can be limited to trusted friends through passwords or invitations. This reduces the likelihood of unwanted interactions and gives adults greater oversight. While some options involve a subscription fee, they offer a safer and more controlled multiplayer experience.

DISCUSS ONLINE STRANGERS

Children should understand that not everyone they meet online is who they claim to be. Clear guidance about not sharing personal information is essential. Encourage children to report any worrying or uncomfortable interactions and reassure them that they can seek help without fear of punishment. Open, ongoing conversations help build their confidence and awareness of these issues.

SET SPENDING BOUNDARIES

Agree on clear rules around purchases before letting children play, and use device settings or platform controls to restrict spending within agreed limits. Explaining that in-game currency uses real-world money can help children make informed decisions. Regularly reviewing purchases together can also prevent unexpected costs and encourage responsible behaviour.

Meet Our Expert

Lloyd Coombes spent 7 years in games media, before moving into the games industry via PR and marketing. A parent himself to a Minecraft-loving son, he understands why it's so important to stay safe online.



The National College®

See full reference list on our website

@wake_up_weds

/www.thenationalcollege

@wake.up.wednesday

@wake.up.weds

Users of this guide do so at their own discretion. No liability is entered into. Current as of the date of release: 20.05.2026