



GREYTHORN PRIMARY

"Engaging hearts, equipping minds, opening doors"

Spring Term

Weekly Newsletter

13th March 2026

DATES FOR THE DIARY

MONDAY 16th MARCH

Year 5/6 National Space Centre

FRIDAY 20th MARCH

9.15am - 10.15am Toddler Stay & Play

Red Nose Day

(‘Wear Something Funny for Money’ online donation)

WEDNESDAY 25th MARCH

Non-Uniform Day

(donate an Easter egg)

FRIDAY 27th MARCH

Egg decorating competition

2.50pm Easter Hat Parade

FRIDAY 24th APRIL

FOGSA BINGO Night

TUESDAY 28th - 30th APRIL

Year 3/4 Ilam Hall

MONDAY 11th - 14th MAY

KS2 SATS 2026

2025/26 TERM DATES

Spring Term

24 February - 27 March 2026

Summer Term

13 April - 21 May 2026

1 June - 24 July 2026

INSET: 22 May, 27 July



A MESSAGE FROM YOUR HEADTEACHER



Dear Parents and Carers,

We've had a fantastic week celebrating British Science Week across the school diving into hands-on experiments, big questions and plenty of awe and wonder!

Thank you to all the families who joined us for this week's parents' meetings, it was wonderful to share your children's progress and celebrate their achievements.

Finally, to our wonderful mums, aunties, grandmas and female role models, Happy Mothers day!

Mrs Carpenter



STEEL CITY TROPHY BRITISH CHAMPIONSHIPS



Deslie and Sonia competed in the Steel City Trophy British Championships synchronised skating competition in Sheffield on Monday as part of the 'Ice Pops' from Nottingham Synchronized Skating Academy. They performed as part of a 16-strong group and amazingly came in first place winning a gold medal! Well done girls.

Proud of you.



PREMIER LEAGUE PRIMARY STARS FOOTBALL REGIONAL TOURNAMENT



Last Wednesday our girls' football team travelled to Chesterfield to play in the Premier League Primary Stars tournament after winning the last tournament at Notts County. The girls were provided with Notts County kit to wear. 12 school teams had qualified for the tournament representing clubs such as Derby County, Sheffield Wednesday, Leicester and Nottingham Forest. The girls played amazingly as a team and finished the group round having won all 5 matches without conceding a goal and with a goal difference of 16! In the semi-final they faced Sheffield Wednesday and won 2-1 which meant they were through to the final. The girls remained focused and determined as they were led onto the pitch by the referee. They faced Leicester in the final (who they had beaten 3-0 in the first round). This time they played brilliantly again and managed another win, 2-0, and were crowned **Primary Stars Regional winners**. We are so proud of them all for this fantastic achievement. They even got to have their photo taken with the Premier League trophy!

We are very excited that the girls are now through to the **national finals** of the Premier League Primary Stars tournament which will take place at a premier league football ground in the summer. Thank you to Mr Bingley and Mr Marks for all their coaching of the team.



Aspiration. Confidence. Creativity. Kindness. Pride. Respect. Resilience. Responsibility



RED NOSE DAY



COMIC RELIEF – RED NOSE DAY 2026

On **Friday 20th March**, we are holding a 'Wear Something Funny for Money' non-uniform day in support of Comic Relief. Children are invited to come to school wearing something funny in return for a donation. The minimum online donation is £2.

If you would like to donate less than £2, children are welcome to team up with friends or combine donations with siblings to reach the minimum amount.

We are **CASHLESS** for Comic Relief so please follow the link below to donate online for your child to take part.

<https://tinyurl.com/nj4tx6f7>

It could be a whole outfit or just an item. Here are some suggestions:

- pyjamas
- a onesie
- inside out clothes
- socks over trousers
- bright colours
- crazy hair style
- novelty wigs or glasses

Thank you for your continued support in helping us raise money for this fantastic cause!

EASTER EVENTS

EASTER HAT PARADE

Friday 27th March

Children can make an Easter hat and parade around the KS1 playground.

Parents and guardians are welcome to come along and watch the parade.

Gates open at 2.50 pm

**Wednesday
25th March**

Non Uniform day in return for a chocolate egg donation

EGG DECORATING COMPETITION

Children are invited to decorate an egg and enter our competition. Please bring all eggs to school on **Friday 27th March.**

Here are some ideas and inspiration!



BRITISH SCIENCE WEEK



British Science Week

At Greythorn, we have been celebrating British Science Week this week. Thank you to everyone who has been involved and has sent in photos of your questions and investigations; we have loved sharing these this week! There's still time to have a go at an experiment and send it over to Miss Mason to receive a prize. (I will send a selection over!)

Over the course of the week, the children have been immersing themselves in science, asking questions and exploring answers.

In **Foundation Stage**, they learned all about Jane Goodall, an ethnologist and the world expert on chimpanzees who lived with and studied them for 60 years! The children continued their learning through their provision.

In **KS1**, they learned all about Mae Jemison, the first Black woman to go to space. They were inspired by her space exploration and the scientific experiments she carried out during her mission, as well as the impact she has had since. We made our own straw rockets and explored how to make them fly, what affects how far they fly and how high they could go.

In **LKS2**, they learned all about Alan Turing, a brilliant mathematician and computer scientist, who helped develop inventions used to crack secret codes with a team of code breakers during World War II. They were very interested and asked lots of questions before having a go at their own code-breaking activities, working out clues and secret messages just like the code breakers did during the war.

In **UKS2**, the children learned about Stephen Hawking, a prominent physicist who demonstrated that physical disabilities do not limit scientific thinking or achievement. The children continued to explore space and gravity through drop experiments.



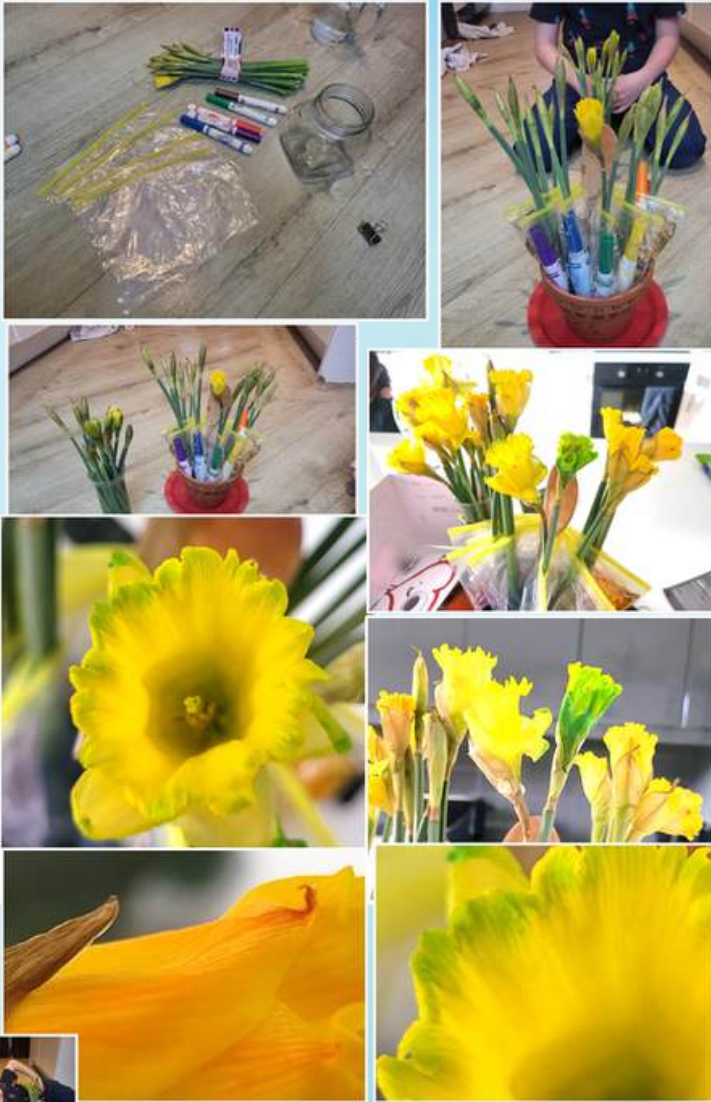
BRITISH SCIENCE WEEK



BRITISH SCIENCE WEEK



BRITISH SCIENCE WEEK



Lickable Glue

Have you ever licked an envelope? What about a stamp? If you have, you will know there are coated with a substance that turns into wet, sticky glue when you lick it. In this experiment, you create your own lickable glue that you can use to seal whatever you like. Best of all, YOU get to choose the flavor. Science has never been so scrumptious!

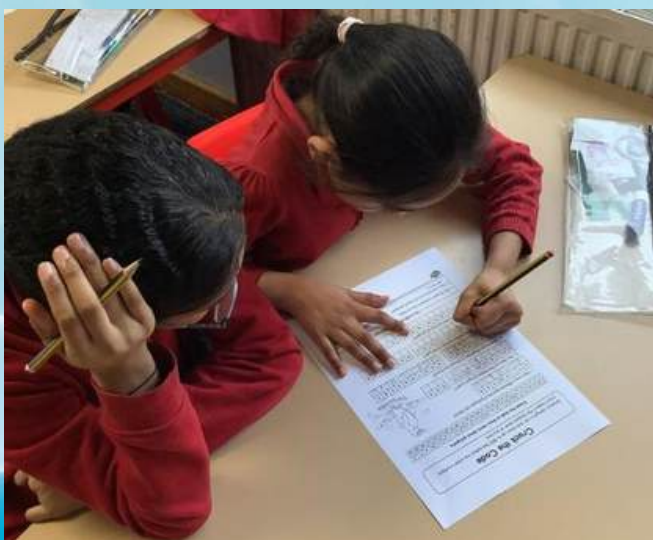
- WHAT YOU'LL NEED**
- 1 tablespoon white vinegar
 - packet of 1/2 unflavored gelatin
 - 1 teaspoon sugar
 - 1/2 teaspoon liquid flavoring of your choice
 - microwave-safe cup or bowl
 - stirring spoon
 - parchment paper
 - salt shaker

Making the lickable glue

- 1 Pour the vinegar into the microwave-safe container. Add an equal half of microwave for 30 seconds. Then remove the container from the microwave.
- 2 Add the gelatin, sugar and liquid flavoring to the mixture. Stir until the gelatin and sugar dissolve. This may take a minute or more, so be patient and keep stirring.
- 3 Draw a sticker design onto the paper and lick it out.
- 4 Dip your parchment into the mixture. Press the mixture in a very thin layer onto the back of your sticker design.
- 5 You now have a strip of dry glue. Just like those on envelopes and stamps.
- 6 To activate your glue, simply lick it with your tongue. LICK IT and STICK IT!



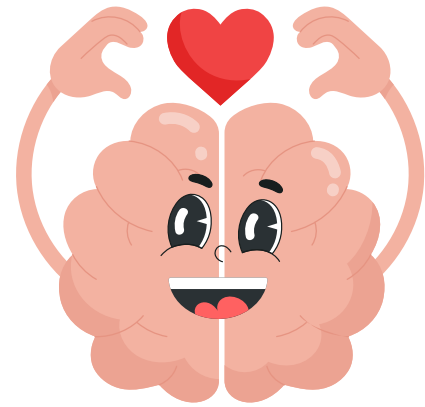
BRITISH SCIENCE WEEK



THIS WEEK'S HIGHLIGHTS

Life Education

This week, EYFS, Year 1/2 and Year 3/4 had a workshop with Life Education. These sessions focused on mental health and well being and ways children can look after themselves. The children learnt about how the brain works and where their feelings come from and thought about different ways to manage their feelings. The children also got a special visit from Harold the giraffe!



Equity

Everybody Different. Everybody Counts

Learn

Believe and Achieve

Mind

Greythorn Primary School

"Engaging hearts, equipping minds, opening doors"

An inclusive community of happy and responsible learners;

dreaming big to make a difference to our World



Aspiration. Confidence. Creativity. Kindness. Pride. Respect. Resilience. Responsibility



THIS WEEK'S HIGHLIGHTS



Foundation

This week Foundation have been practising their handwriting skills.

Practice
makes
PROGRESS

The	red	bus	went	on	a	trip.

The red bus fell in the deep
POND.

26.2.26 (I) Naughty Bus

The bus	fell	in	the cold pond
---------	------	----	---------------

The bus fell in the cold
POND.

Naughty Bus

The	boy	went	a	red	
-----	-----	------	---	-----	--

The boy got a red bus.
The bus went to his bed.

THIS WEEK'S HIGHLIGHTS

Year 3/4

Year 3/4 had an amazing time at the Tropical Butterfly House last Friday. They were able to see the butterflies up close in the hot butterfly house and were allowed to meet a skink in the small animals enclosure. They also got to see so many different animals in the wildlife park, including otters, porcupines and wallabies. The children were all so excited by the variety of animals and were able to speak so knowledgeably about all the animals and their adaptations. It was such a brilliant visit!



THIS WEEK'S HIGHLIGHTS

Year 5/6

Year 5/6 have been working on their Geographic Information Systems (layered maps) of Antarctica. So far, they have looked at altitude, population, territories and the surrounding oceans.



FOGSA

SAVE THE DATE!

BINGO

BINGO

night

FUN FOR ALL THE FAMILY!
DJ GAMES PRIZES
REFRESHMENTS

FRIDAY 24TH APRIL
GREYTHORN SCHOOL HALL



NON-UNIFORM DAY!

WEDNESDAY 25TH MARCH
PLEASE DONATE AN EASTER EGG!

CHOCOLATE TOMBOLA
FOLLOWING EASTER BONNET
PARADE ON FRIDAY 27TH MARCH



Week

2

My School Menu

Winter 2025 - 2026

Week commencing

10th November, 1st December,

12th January, 2nd February,

23rd February, 16th March



Monday

Tuesday

Wednesday

Thursday

Friday

Option 1

Margherita pizza

Soya Gluten Milk

With
potato balls,
baked beans
&
sweetcorn

Quorn dipper

Gluten

with
tomato ketchup,
peas
&
French fries

Cheesy tomato
pasta

*Mustard Soya
Gluten Milk*

with
garlic bread
Gluten Soya Milk
sweetcorn
&
peas

Bangers, mash
&
Yorkshire pudding

*Gluten Egg Milk
Sulphur Dioxide*

OR

plant based sausage
Soya Sulphur Dioxide
with
seasonal vegetables
&
gravy

MSC Fish fingers

Fish Gluten

OR

Fishless fingers
Gluten
with
oven chips,
baked beans
&
peas

Pudding

Donuts

*Soya Milk Gluten
Egg Sesame*

JimJam 'nut free'

chocolate
croissant
Gluten Milk

Chocolate muffin

Egg Gluten

Vanilla sponge

Gluten Egg
&

raspberry sauce

Fruit ice lolly

FOOD HYGIENE RATING

0

1

2

3

4

5

VERY GOOD



TODDLER STAY AND PLAY

A VERY WARM WELCOME

AWAITS YOU

AND YOUR CHILDREN

For Parents/Carers with Children (age 0 -4 yrs) living in the
local community

Come and join us for playtime, chat and refreshments



Free of Charge

Friday 9.15AM -
10.15AM

20th March



Please email/telephone to reserve your place

COMMUNITY NEWS



Parking

Please do not use **Hyde Park Close** to park on or for dropping off. The road does not have a pavement and it is not safe to be manoeuvring around pedestrians in such a small space. The same applies to **Uppingham Crescent**. Please do not park on this road or on the pavement. Pavement parking leaves very little space for school pedestrians, making it unsafe, and parked cars are also causing difficulties for vehicles trying to pass along the road.



 St Paul's Boundary Road

Messy Church **FREE!**

Arts and crafts
Bible stories
Singing together
Meal included!

Lots of fun for children of all ages and their parents and carers. Come along and get creative!

Saturday 21st March
3:45pm - 5:30pm



Scan to book your FREE place >>>
or visit stpaulsboundaryroad.churchsuite.com/events/iouzja01

St Paul's Church, Boundary Road, NG2 7DB



EASTER



HOLIDAY CLUB VENUES

OPERATING FROM MONDAY 30TH MARCH UNTIL FRIDAY 10TH APRIL
EXCLUDING GOOD FRIDAY AND BANK HOLIDAY MONDAY

GREYTHORN PRIMARY SCHOOL - NG2 7GH
8 DAYS AVAILABLE TO BOOK

MANOR PARK PRIMARY SCHOOL - NG14 6JZ
7 DAYS AVAILABLE TO BOOK

RADCLIFFE ON TRENT INFANTS - NG12 2GA
8 DAYS AVAILABLE TO BOOK

ST JOHN THE BAPTIST COLWICK - NG4 2ED
7 DAYS AVAILABLE TO BOOK

WEST BRIDGFORD JUNIORS - NG2 6DB
7 DAYS AVAILABLE TO BOOK

WILLOW FARM PRIMARY SCHOOL - NG4 4BN
8 DAYS AVAILABLE TO BOOK

REGISTER OR LOGIN TO MAGIC BOOKING NOW
TO RESERVE YOUR SPACE
[HTTPS://TBSPORT.MAGICBOOKING.CO.UK](https://tbsport.magicbooking.co.uk)



BOOKINGS
NOW LIVE

MONDAY - THURSDAY
8AM - 6PM - £20.50

FRIDAY
8AM - 5PM - £23.99

BOOK NOW
PAY IN 7 DAYS



What Parents & Educators Need to Know about STREAMING SERVICES

Streaming services are platforms that allow users to watch cartoons, documentaries and movies online immediately (often referred to as SVOD: streaming videos on demand). Ofcom reported that children and young adults prefer streaming services to traditional TV. With two-thirds of UK households subscribing to at least one streaming service, parents must understand how to manage screen time, set age restrictions and ensure safe viewing.

WHAT ARE THE RISKS?

COSTLY

Subscription services can be costly. As the main source of entertainment, most households have at least one streaming platform, and each platform has its own monthly subscription fee. Services are charging more for ad-free viewing, and better quality and resolution; however, there is a cheaper option with adverts. Due to price increases, Netflix and Disney+ reported a sharp increase in users subscribing to their ad-supported tier in 2025.

ILLEGAL STREAMING

Sharing passwords or using modified Fire Sticks to access streaming content without permission is illegal. Most streaming services have now put measures in place to detect account sharing. When account sharing is identified, platforms will offer an opportunity to pay for an added member or will ask the user to verify who they are.

AGE-INAPPROPRIATE CONTENT

Most streaming platforms allow users to set up a profile for each family member, with the option of putting specific restrictions in place. These include adding a profile lock or PIN, controlling autoplay of previews and next episodes, and limiting content based on age ratings. Nonetheless, these restrictions aren't foolproof. Content which is rated as suitable for an age group may still include themes, language, or images which children and families find inappropriate.

EXCESSIVE SCREEN TIME

Excessive screen time contributes to sedentary behaviour and can negatively impact physical and mental health. Ofcom found that 4- to 15-year-olds averaged 1.3 hours per day across all video-sharing platforms, not including gaming. The vast range of content available, combined with features such as autoplay, makes it easy for children to watch for extended periods of time.

BINGE WATCHING

Features such as autoplay make it easy for viewers – especially young people – to continue watching episodes without a break. This can foster unhealthy and addictive patterns, such as consuming a vast amount of content in one sitting. With binge watching come a lack of social interaction, lack of physical exercise, and often late nights and sleep disruptions which impact their mental and physical wellbeing.

HARMFUL STEREOTYPES

Many platforms track viewing habits, time consumed, and preferences, and generate recommendations to encourage your child to keep watching. This results in your child being in a 'loop' whereby they think the recommended shows would be something they would enjoy rather than thinking critically for themselves. This can shape their beliefs, values, and understanding of the world from a young age without even realising it.

Advice for Parents & Educators

SET UP INDIVIDUAL PROFILES AND ADD PINS

Almost all streaming services allow users to set up individual profiles where each family member can have age restrictions put in place for the content they can view. Adult profiles can be protected through the use of PIN. Keep this private, use the options of putting specific restrictions in place such as controlling autoplay of previews and next episodes, and limiting content based on age ratings.

MONITOR AND TALK OFTEN

Discuss with your child what they are watching. Find out which programmes are trending, and watch them yourself. Have a little look at their watch history to check the content of what they're watching. Some platforms have been known to recommend or autoplay older or graphic content after a child's movie has been played. While some TV shows or movies may have a suitable age rating, your child may still find the content scary, or it may explore themes you don't want to explore with your child yet.

TALK ABOUT ALGORITHMS

Talk to your child about how streaming services track what they watch, and how adverts and recommended shows/movies are generated. Encourage them to critically think about whether the recommendations are suitable and how they want to spend their time. Discuss stereotypes with your child and challenge them to think about what they watch and how this may influence their beliefs.

SET TIME RESTRICTIONS

Many streaming services offer the opportunity to buy movies, or add additional features to your subscription such as sports channels, as well as play games. This can increase the amount of time young people spend sitting idly in front of the screen. Some platforms (e.g. Apple TV+) allow you to set screen time restrictions. If the streaming service doesn't allow you to set screen time limits, set a family rule and stick to it.

Meet Our Expert

Dr Claire Sulthard is an online safety consultant, educator, and researcher who has developed and implemented anti-bullying and cyber safety policies for schools. She has written various academic papers and carried out research for the Australian Government, comparing internet use and sexting behaviour of young people in the UK, USA and Australia.



#WakeUpWednesday

The National College