



GREYTHORN PRIMARY

"Engaging hearts, equipping minds, opening doors"

Spring Term

Weekly Newsletter

27th February 2026

DATES FOR THE DIARY



1 THURSDAY 5th MARCH

World Book Day
(Come dressed as a book character!)

FRIDAY 6th MARCH

9.15 am Toddler Stay & Play
Year 3/4 Tropical Butterfly House

MONDAY 9th MARCH

British Science Week

MONDAY 16th MARCH

Year 5/6 National Space Centre



FRIDAY 20th MARCH

Red Nose Day
(*'Wear Something Funny for Money'* online donation)

TUESDAY 28th – 30th APRIL

Year 3/4 Ilam Hall

MONDAY 11th – THURSDAY 14th MAY

KS2 SATS 2026

2025/26 TERM DATES

Spring Term

5 January – 13 February 2026
24 February – 27 March 2026

Summer Term

13 April – 21 May 2026
1 June – 24 July 2026

INSET: 23 Feb, 22 May, 27 July



A MESSAGE FROM YOUR HEADTEACHER



Dear Parents and Carers,

We hope all our school families enjoyed a wonderful Chinese New Year during the school holidays. We trust it was a special time filled with joy, family traditions and meaningful moments together.

As we welcome the new year, we wish all our families happiness, good health and prosperity in the months ahead. We are always proud to celebrate the rich diversity within our school community and thank you for sharing these important cultural occasions with us.

Mrs Carpenter



WORLD BOOK DAY

World Book Day 2026

THURSDAY 5TH MARCH

Come dressed up as a book character! There will be prizes for the best outfits across the school! There will be other competitions for all year groups - more information to follow nearer the time.

The Foundation Stage and KS1 children will enjoy a mix-up morning full of book-related activities across all the classrooms.

The KS2 children will have a virtual author visit with poet Matt Goodfellow.



BRITISH SCIENCE WEEK



SCIENCE



On the week commencing **9th March**, we will be celebrating British Science Week.

The theme of the week is, 'Curiosity: what's your question?'

This theme is all about getting us thinking about what we most want to know about the world, and how we could find out. Curiosity is at the heart of science! All scientific discoveries and advancements have come from a spark of curiosity.

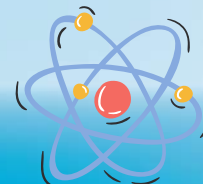
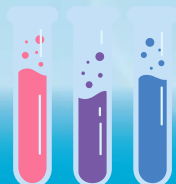
Over the course of the week, we will be coming up with questions as well as doing lots of exciting science activities and hands on investigations.

We would love for you to get involved at home as well. Please see the post on Class Dojo for a variety of experiment ideas. It would be fantastic if you could have a go at some of these experiments (or your own!) between now and the end of British Science Week. We would love to see how everyone has been demonstrating curiosity! Please share your questions and explorations on ClassDojo by sending them to me (Miss Mason). All the children who share their explorations on ClassDojo will receive a prize and some of the children will have the opportunity to share their investigations and observations in our assembly on **Monday 9th March**.

If you are a scientist or work in the science field and would like to talk to your child's class about your work, please also get in touch! We would love to hear from you!

The Nottinghamshire Festival of Science and Curiosity is also currently underway this week and next week (half term). Please see the website if you would like further information or to get involved: <https://nottsfosac.co.uk/>

Happy investigating!



RED NOSE DAY



COMIC RELIEF – RED NOSE DAY 2026

On **Friday 20th March**, we are holding a 'Wear Something Funny for Money' non-uniform day in support of Comic Relief. Children are invited to come to school wearing something funny in return for a donation. The minimum online donation is £2.

If you would like to donate less than £2, children are welcome to team up with friends or combine donations with siblings to reach the minimum amount.

We are **CASHLESS** for Comic Relief so please follow the link below to donate online for your child to take part.

https://www.justgiving.com/fundraising/rnd26-greythorn-primary-school?utm_medium=FR&utm_source=CL&utm_campaign=020

It could be a whole outfit or just an item. Here are some suggestions:

- pyjamas
- a onesie
- inside out clothes
- socks over trousers
- bright colours
- crazy hair style
- novelty wigs or glasses

Thank you for your continued support in helping us raise money for this fantastic cause!

THIS WEEK'S HIGHLIGHTS

Foundation

At the end of last half term, our wonderful Foundation artists donned their aprons and went to town. We ended our unit, which focused on the artist Yannima Tommy Watson, by taking inspiration from his abstract collections to create our own pieces. We combined all of our new skills, from brush strokes to mixing shades of colour, right through to adding the finer details. We are extremely happy with our outcomes, and our gallery has been transformed.



THIS WEEK'S HIGHLIGHTS



Year 1/2

Year 1 and 2 have been very lucky this week to have a visitor from a chocolatier, who taught us how to temper chocolate before we made our own chocolate lollipops and truffles. We also had the opportunity to practise decorating the chocolate products and piping techniques. They had so much fun!

Chocolate,



THIS WEEK'S HIGHLIGHTS

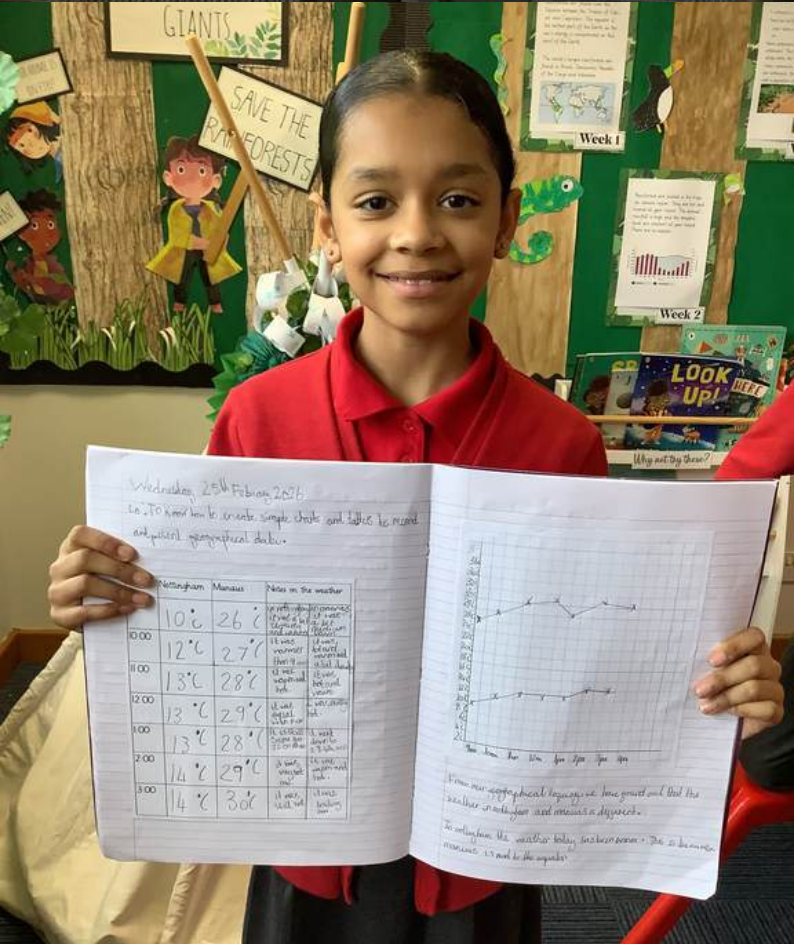
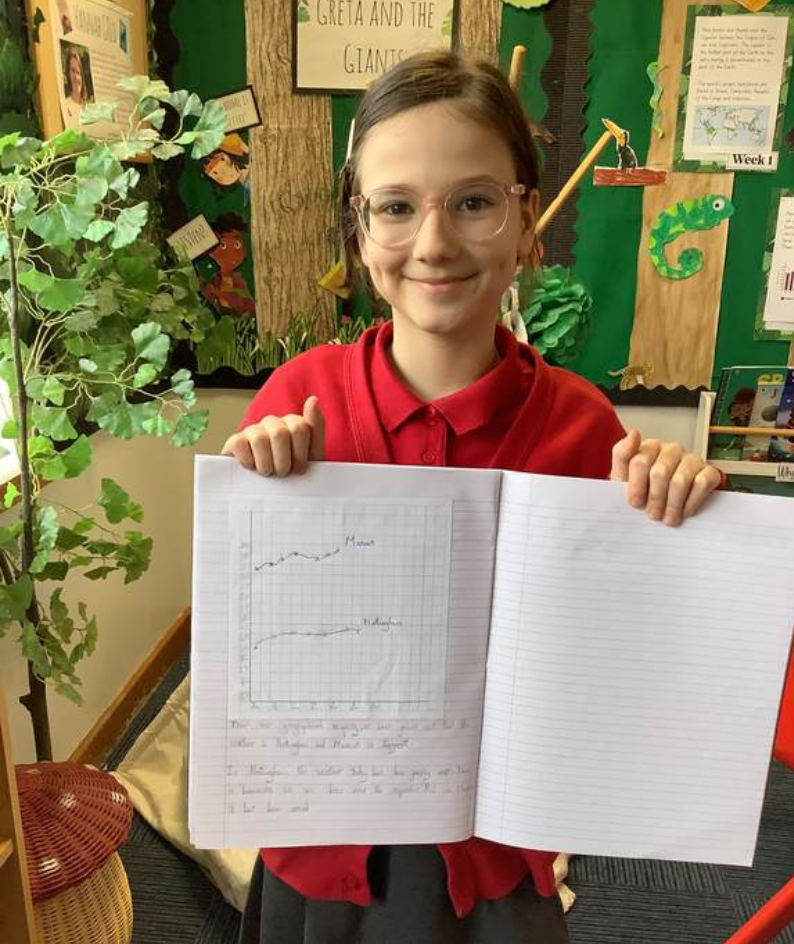
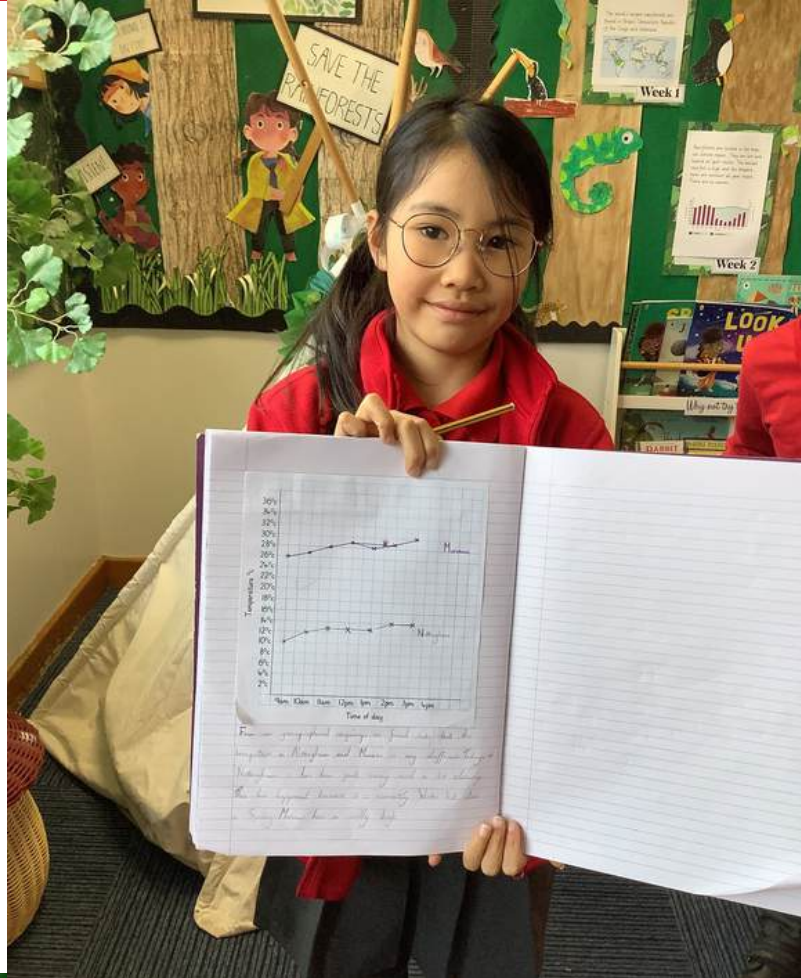
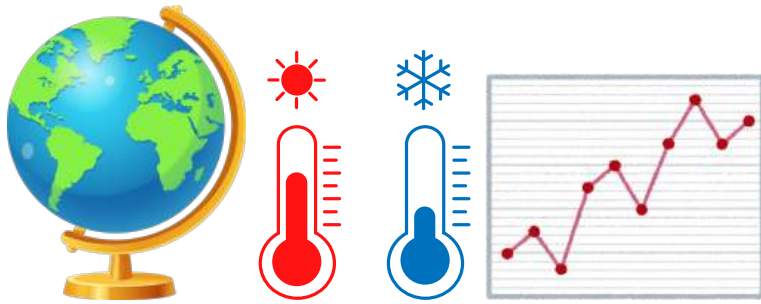


THIS WEEK'S HIGHLIGHTS

Year 3/4

This week in Year 3/4, we completed an exciting geographical enquiry comparing the weather in Manaus and Nottingham. The children collected data throughout the day and used it to create detailed line graphs to present their findings. They then analysed the information and wrote thoughtful conclusions based on the patterns they observed.

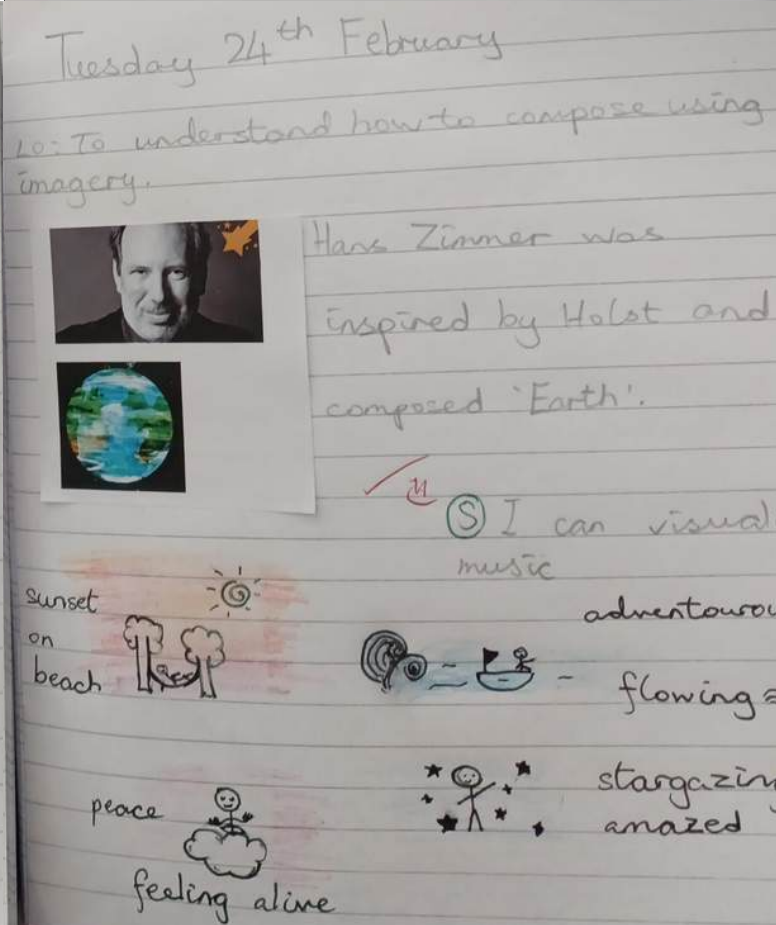
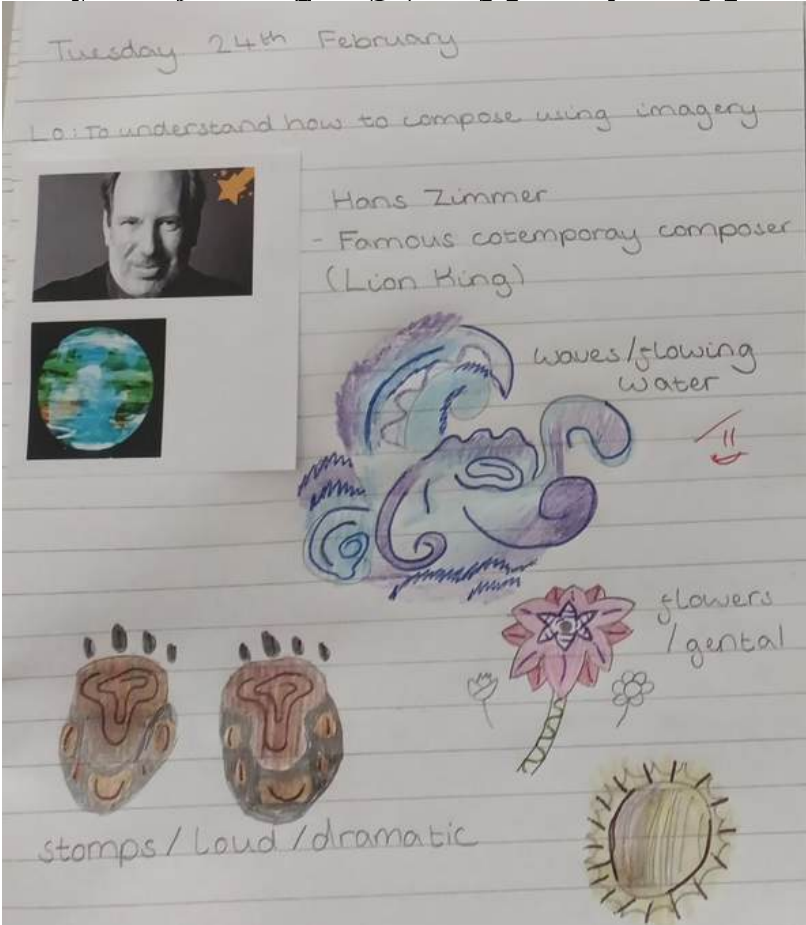
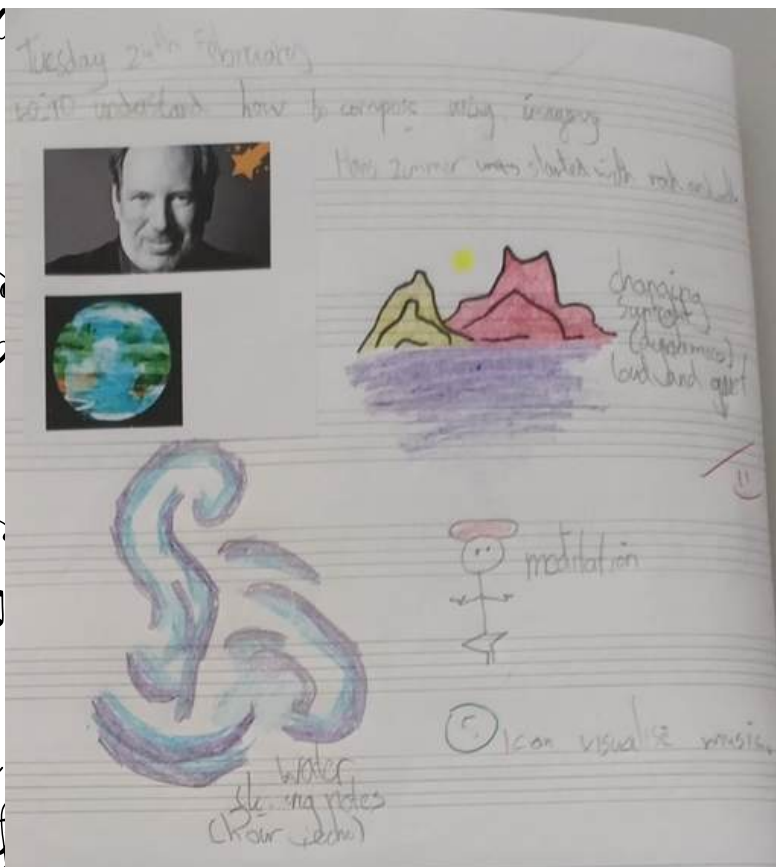
The children demonstrated fantastic geographical skills, including data collection, graph drawing, analysis and interpretation. They approached the task with enthusiasm and showed great care and accuracy in their work. We are very proud of our budding geographers.



THIS WEEK'S HIGHLIGHTS

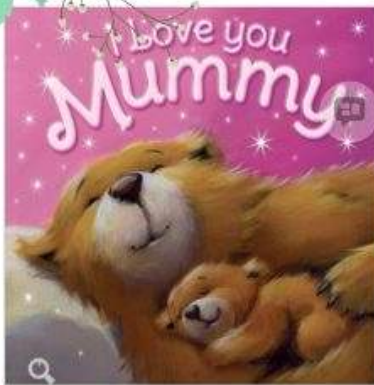
Year 5/6

Year 5/6 have been looking into the composer Hans Zimmer. We listened to his piece 'Earth', drew what the music reminded us of, and wrote notes about our impressions.





Mother's Day Gifts



Storybook £2.50



**Blooming Lovely Plushie
£5.00**



Mum Socks £2.50

Mum Mug £5.00



**Chaos and Cuddles Mug
£5.00**



Now available to purchase on Parent Pay!
Limited stock available so order early to avoid disappointment



COMMUNITY NEWS



Parking

Please do not use **Hyde Park Close** to park on or for dropping off. The road does not have a pavement and it is not safe to be manoeuvring around pedestrians in such a small space. The same applies to **Uppingham Crescent**. Please do not park on this road or on the pavement. Pavement parking leaves very little space for school pedestrians, making it unsafe, and parked cars are also causing difficulties for vehicles trying to pass along the road.



Rushcliffe Scouts needs more volunteers, can you help?



Week by week, our volunteers empower over a thousand young people to try new things, make new friends and stand on their own two feet.

You don't need to have been a Scout when you were younger. You don't even need to know how to put up a tent. Whatever your skillset, lend a hand for as little or as much time as you can spare, and we promise you'll get more out than you put in.

We provide the training. You show up, get stuck in, and make new memories for life. Sounds fun? Worthwhile? It is.

Our Sections aged 4-18 meet on various nights across Rushcliffe. Whether you could help 1 night a week running a section, help occasionally or join a trustee board to, please get in touch.

Contact www.rushcliffescouts.org.uk/contact

THIS AMATEUR PRODUCTION OF "GEORGE'S MARVELLOUS MEDICINE" IS PRESENTED BY ARRANGEMENT WITH CONCORD THEATRICALS LTD. THE HERALD OF SAMUEL FRENCH LTD. 14344.CONCORDTHEATRICALS.CO.UK



GEORGE'S MARVELLOUS MEDICINE

BY ROALD DAHL
ADAPTED BY DAVID WOOD

11TH AND 12TH APRIL 2026
THE GRANGE HALL, RADCLIFFE ON TRENT



ACROSSTHEBOARDS.ORG



Aspiration. Confidence. Creativity. Kindness. Pride. Respect. Resilience. Responsibility



Week

3

My School Menu

Winter 2025 - 2026

Week commencing

17th November, 8th December,

14th January, 9th February,

2nd March, 23rd March.



	Monday	Tuesday	Wednesday	Thursday	Friday
Option 1	<p>Margherita pizza <i>Soya Gluten Milk</i> with potato balls, baked beans & sweetcorn</p>	<p>Vegetarian roll <i>Soya Milk Gluten</i> with French fries, seasonal vegetables & gravy</p>	<p>Beef Bolognese <i>Mustard Soya Gluten</i> OR Quorn Bolognese <i>Mustard Soya Gluten Egg</i> with garlic bread, <i>Gluten Milk Soya</i> pepper & cucumber sticks</p>	<p>Bangers, mash & Yorkshire pudding <i>Gluten Egg Milk Sulphur Dioxide</i> OR plant based sausage <i>Soya Sulphur Dioxide</i> with seasonal vegetables & gravy</p>	<p>MSC Fish fingers <i>Fish Gluten</i> OR Fishless fingers <i>Gluten</i> with oven chips, baked beans & peas</p>
Pudding	<p>Yoghurt pot <i>Milk</i></p>	<p>Golden syrup flapjack <i>Gluten</i></p>	<p>Iced sprinkle cookie <i>Gluten</i></p>	<p>JimJam 'Nut Free' Chocolate brownie <i>Egg Milk Gluten</i></p>	<p>Ice cream tub <i>Milk</i></p>

FOOD HYGIENE RATING

0 1 2 3 4 **5**

VERY GOOD



TODDLER STAY AND PLAY

A VERY WARM WELCOME

AWAITS YOU

AND YOUR CHILDREN

For Parents/Carers with Children (age 0 -4 yrs) living in the
local community

Come and join us for playtime, chat and refreshments



Free of Charge

Friday 9.15AM -
10.15AM

6th March
20th March



Please email/telephone to reserve your place

What Parents & Educators Need to Know about ADULT ANIMATED CONTENT

Bright, bold, and widely shared, adult animated content is more popular than ever, but not always what it seems. These videos, which may appear cartoonish and harmless, often contain strong language, explicit themes, graphic violence, or dark humour. Many are accessible through platforms like YouTube, TikTok or streaming services, where filters may not catch them in time.

WHAT ARE THE RISKS?

MISLEADING VISUAL STYLE

Many adult animations mimic the colourful, exaggerated look of children's cartoons. This can easily mislead not just children, but also adults, into thinking they're suitable for younger viewers. Without watching the content fully, parents or educators might approve a show or video that contains explicit jokes, graphic imagery, or highly inappropriate language, all disguised beneath a playful and fun visual style.

EXPOSURE TO HARMFUL THEMES

A number of adult animated shows and online videos explore mature or disturbing themes, such as addiction, trauma, abuse, self-harm, or violence, and often do so in a stylised or humorous way. Younger viewers may not have the emotional maturity to process this content, leading to confusion, distress, or the normalisation of very serious issues that should be discussed in a supportive context.

RISK OF DISTRESS AND FEAR

Some adult animations, especially horror-based content or 'creepypasta' style stories, include disturbing imagery, unsettling music, and sudden scares. These videos sometimes feature distorted versions of well-known children's characters, such as Sonic the Hedgehog or Peppa Pig, in frightening or violent scenarios. Children can be negatively affected if they come across this unexpectedly, leading to sleep disturbances, anxiety, or long-lasting fears, especially if children have existing worries or sensitive personalities.

INFLUENCE OF EDGY HUMOUR

Dark, edgy humour is common in adult animation and often includes jokes about topics like sexism, racism, mental illness, or abuse. When children hear these jokes, they may repeat them without fully understanding their meaning. This can lead to inappropriate behaviour in school or online spaces, and in some cases, it can reinforce harmful stereotypes or desensitise children to real-world injustice and discrimination.

ALGORITHMIC RECOMMENDATIONS

Video platforms are designed to keep users watching by suggesting similar content. If a child watches one mature animation, they may quickly be shown more, including even darker or more extreme videos. These recommendations are based on viewing patterns, not age-appropriateness. Without strict settings in place, this can lead to a rapid spiral into unsuitable, upsetting, or even harmful content online.

DESENSITISATION TO VIOLENCE

Stylised violence in animation is often exaggerated and constant. Repeated exposure to it can reduce a child's emotional response to harm, making aggression or cruelty appear entertaining or acceptable. Over time, children may become less empathetic or more tolerant of harmful behaviours in real life, especially if they see others online reacting with humour, memes, or praise for violent characters or scenes.

Advice for Parents & Educators

LEARN WHAT CHILDREN ARE WATCHING

Take time to ask children what they're watching and who their favourite creators are. Sit down and watch a few videos to get a full understanding. This helps you spot inappropriate content early and shows children that you're interested and engaged in their online world, not just policing it.

USE PLATFORM SETTINGS WISELY

Make use of built-in safety tools like content filters, restricted mode, and age settings on platforms such as YouTube, Netflix or TikTok. Turn off auto-play where possible and regularly review what children are being recommended. Although these settings aren't foolproof, they add an important layer of protection and help reduce the risk of children encountering disturbing or adult content accidentally.

TALK ABOUT WHAT'S APPROPRIATE

Keep communication open and non-judgemental. Talk about why certain themes or jokes are not appropriate for children, even if they appear in animated form. Help children understand that just because something is popular or shared widely, it does not mean it's suitable or safe. If they've seen something upsetting, respond calmly, offer reassurance, and explain things in an age-appropriate way.

ENCOURAGE CRITICAL THINKING

Help children think carefully about what they watch. Talk about the difference between fictional exaggeration and reality, while helping them question why certain content is made. Is it informative, entertaining, or meant to shock? This builds digital resilience and encourages them to make safer choices in future, rather than simply following viral trends or peer pressure to watch mature content.

Meet Our Expert

Home to the world's largest CPD library for educators, The National College has transformed the way education establishments go about developing their workforces and managing compliance. We offer memberships and packages to help all phases and types of setting raise standards, save time, reduce risk, and build a culture of improvement.

#WakeUpWednesday

The National College

See full reference list on our website